

For Research Use Only

SEC16A Monoclonal antibody

Catalog Number: 68493-1-Ig



Basic Information

Catalog Number: 68493-1-Ig	GenBank Accession Number: NM_014866	Purification Method: Protein G purification
Size: 150ul , Concentration: 1000 µg/ml by Nanodrop;	GeneID (NCBI): 9919	CloneNo.: 1D9A5
Source: Mouse	Full Name: SEC16 homolog A (S. cerevisiae)	Recommended Dilutions: WB 1:5000-1:50000
Isotype: IgG1	Calculated MW: 234 kDa	
	Observed MW: 250-300 kDa	

Applications

Tested Applications:
WB, ELISA

Species Specificity:
Human

Positive Controls:
WB : LNCaP cells, HeLa cells, HEK-293 cells, Jurkat cells

Background Information

SEC16A, also named as KIAA0310, SEC16 and SEC16L, is required for secretory cargo traffic from the endoplasmic reticulum to the Golgi apparatus. SAR1A-GTP-dependent assembly of SEC16A on the ER membrane forms an organized scaffold defining an ERES. SEC16A is required for normal transitional endoplasmic reticulum (tER) organization.

Storage

Storage:
Store at -20°C. Stable for one year after shipment.

Storage Buffer:
PBS with 0.02% sodium azide and 50% glycerol pH 7.3.

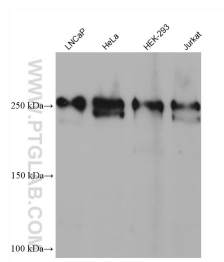
Aliquoting is unnecessary for -20°C storage

*** 20ul sizes contain 0.1% BSA

For technical support and original validation data for this product please contact:
T: 1 (888) 4PTGLAB (1-888-478-4522) (toll free in USA), or 1(312) 455-8498 (outside USA) E: proteintech@ptglab.com
W: ptglab.com

This product is exclusively available under Proteintech Group brand and is not available to purchase from any other manufacturer.

Selected Validation Data



Various lysates were subjected to SDS PAGE followed by western blot with 68493-1-Ig (SEC16A antibody) at dilution of 1:10000 incubated at room temperature for 1.5 hours.