

For Research Use Only

PSPH Monoclonal antibody

Catalog Number: 68500-1-Ig **Featured Product**



Basic Information

Catalog Number: 68500-1-Ig	GenBank Accession Number: BC063614	Purification Method: Protein A purification
Size: 150ul , Concentration: 1000 µg/ml by Nanodrop;	GeneID (NCBI): 5723	CloneNo.: 1B12G3
Source: Mouse	UNIPROT ID: P78330	Recommended Dilutions: WB 1:5000-1:50000 IP 0.5-4.0 ug for 1.0-3.0 mg of total protein lysate IHC 1:2000-1:8000 IF 1:200-1:800
Isotype: IgG1	Full Name: phosphoserine phosphatase	
Immunogen Catalog Number: AG6070	Calculated MW: 25 kDa	
	Observed MW: 25 kDa	

Applications

Tested Applications:

IF, IHC, IP, WB, ELISA

Species Specificity:

Human, mouse, rat

Note-IHC: suggested antigen retrieval with TE buffer pH 9.0; (*) Alternatively, antigen retrieval may be performed with citrate buffer pH 6.0

Positive Controls:

WB : HepG2 cells, A375 cells, HeLa cells, HEK-293 cells, Jurkat cells, K-562 cells, HSC-T6 cells, NIH/3T3 cells, 4T1 cells

IP : HL-60 cells,

IHC : mouse spleen tissue,

IF : HepG2 cells,

Background Information

PSPH (phosphoserine phosphatase) is an enzyme, which is involved in the process of L-serine biosynthesis. PSPH mainly plays role in multiple aspects of cell behaviours such as proliferation and differentiation by producing precursors for the biosynthesis of diverse compounds including neurotransmitters, glycolipids and thymidine (PMID: 11237721, PMID: 19963421). Additionally, augmented PSPH level is correlated with the prognosis in multiple cancers including cutaneous squamous cell carcinoma (PMID: 21726982), breast cancer (PMID: 28931725), non-small cell lung cancer (PMID: 30662358), colorectal cancer (PMID: 24146633) and hepatocellular carcinoma (PMID: 25793315).

Storage

Storage:

Store at -20°C. Stable for one year after shipment.

Storage Buffer:

PBS with 0.02% sodium azide and 50% glycerol pH 7.3.

Aliquoting is unnecessary for -20°C storage

***** 20ul sizes contain 0.1% BSA**

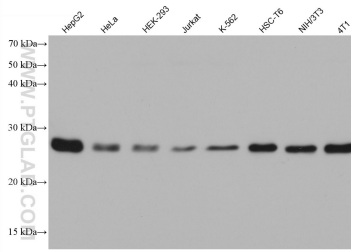
For technical support and original validation data for this product please contact:

T: 1 (888) 4PTGLAB (1-888-478-4522) (toll free in USA), or 1(312) 455-8498 (outside USA)

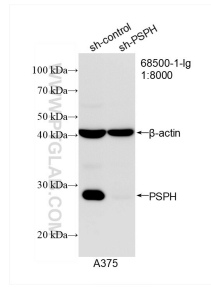
E: proteintech@ptglab.com
W: ptglab.com

This product is exclusively available under Proteintech Group brand and is not available to purchase from any other manufacturer.

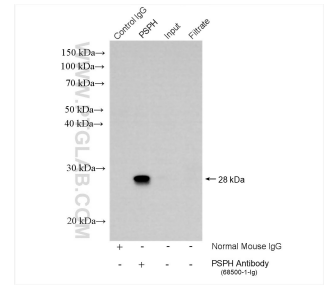
Selected Validation Data



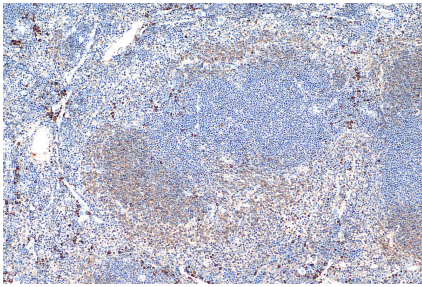
Various lysates were subjected to SDS PAGE followed by western blot with 68500-1-Ig (PSPH antibody) at dilution of 1:20000 incubated at room temperature for 1.5 hours.



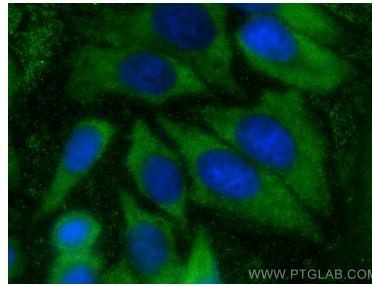
WB result of PSPH antibody (68500-1-Ig; 1:8000; incubated at room temperature for 1.5 hours) with sh-Control and sh-PSPH transfected A375 cells.



IP result of anti-PSPH (IP:68500-1-Ig, 4ug; Detection:68500-1-Ig 1:5000) with HL-60 cells lysate 2440 ug.



Immunohistochemical analysis of paraffin-embedded mouse spleen tissue slide using 68500-1-Ig (PSPH antibody) at dilution of 1:4000 (under 10x lens). Heat mediated antigen retrieval with Tris-EDTA buffer (pH 9.0).



Immunofluorescent analysis of (-20°C Ethanol) fixed HepG2 cells using PSPH antibody (68500-1-Ig, Clone: 1B12G3) at dilution of 1:400 and CoraLite®488-Conjugated AffiniPure Goat Anti-Mouse IgG(H+L).