

For Research Use Only

ATP1A1/2 Monoclonal antibody

Catalog Number: 68505-1-Ig



Basic Information

Catalog Number: 68505-1-Ig	GenBank Accession Number: BC052271	Purification Method: Protein A purification
Size: 150ul , Concentration: 500 ug/ml by Nanodrop;	GeneID (NCBI): 477	CloneNo.: 3D8G1
Source: Mouse	UNIPROT ID: P50993	Recommended Dilutions: WB 1:5000-1:50000 IF/ICC 1:500-1:2000
Isotype: IgG1	Full Name: ATPase, Na ⁺ /K ⁺ transporting, alpha 2 (+) polypeptide	
Immunogen Catalog Number: AG10489	Calculated MW: 1020 aa, 112 kDa	
	Observed MW: 97-100 kDa	

Applications

Tested Applications: WB, IF/ICC, ELISA	Positive Controls:
Species Specificity: human, mouse, rat, pig	WB : rat brain tissue, SK-BR-3 cells, rat kidney tissue, pig brain tissue, mouse brain tissue
	IF/ICC : C2C12 cells, HEK-293 cells

Background Information

ATP1A1/2 is the catalytic component of the active enzyme Na⁺/K⁺-ATPase, which catalyzes the hydrolysis of ATP coupled with the exchange of sodium and potassium ions across the plasma membrane. The Na⁺/K⁺-ATPase is composed of a larger catalytic α -subunit (~110 kDa) and a small β -subunit (~55 kDa). The α subunit has four isoforms identified to date: α 1, α 2, α 3 and α 4. The α 1 isoform is expressed ubiquitously but the α 2 isoform is present largely in the skeletal muscle, heart and vascular smooth muscle. The α 3 isoform is found almost exclusively in neurons and ovaries. The α 4 isoform is expressed in sperm. This antibody can recognize ATP1A1 and ATP1A2.

Storage

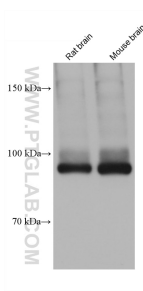
Storage:
Store at -20°C. Stable for one year after shipment.
Storage Buffer:
PBS with 0.02% sodium azide and 50% glycerol, pH7.3
Aliquoting is unnecessary for -20°C storage

*** 20ul sizes contain 0.1% BSA

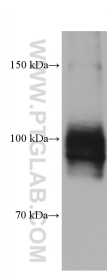
For technical support and original validation data for this product please contact:
T: 1 (888) 4PTGLAB (1-888-478-4522) (toll free in USA), or 1(312) 455-8498 (outside USA)
E: proteintech@ptglab.com
W: ptglab.com

This product is exclusively available under Proteintech Group brand and is not available to purchase from any other manufacturer.

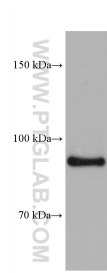
Selected Validation Data



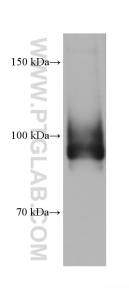
Various lysates were subjected to SDS PAGE followed by western blot with 68505-1-Ig (ATP1A1/2 antibody) at dilution of 1:20000 incubated at room temperature for 1.5 hours.



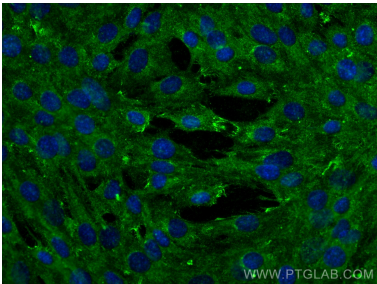
SK-BR-3 cells were subjected to SDS PAGE followed by western blot with 68505-1-Ig (ATP1A1/2 antibody) at dilution of 1:20000 incubated at room temperature for 1.5 hours.



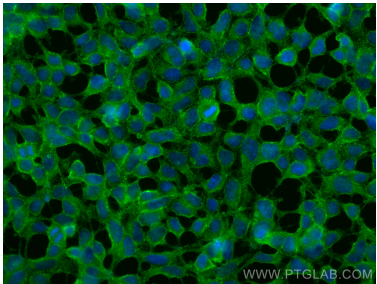
rat kidney tissue were subjected to SDS PAGE followed by western blot with 68505-1-Ig (ATP1A1/2 antibody) at dilution of 1:20000 incubated at room temperature for 1.5 hours.



pig brain tissue were subjected to SDS PAGE followed by western blot with 68505-1-Ig (ATP1A1/2 antibody) at dilution of 1:20000 incubated at room temperature for 1.5 hours.



Immunofluorescent analysis of (-20°C Ethanol) fixed C2C12 cells using ATP1A1/2 antibody (68505-1-Ig, Clone: 3D8G1) at dilution of 1:450 and Coralite®488-Conjugated Goat Anti-Mouse IgG(H+L) (SA00013-1).



Immunofluorescent analysis of (-20°C Ethanol) fixed HEK-293 cells using ATP1A1/2 antibody (68505-1-Ig, Clone: 3D8G1) at dilution of 1:400 and Coralite®488-Conjugated Goat Anti-Mouse IgG(H+L) (SA00013-1).