

For Research Use Only

ATP6V0D1 Monoclonal antibody

Catalog Number: 68506-1-Ig



Basic Information

Catalog Number: 68506-1-Ig	GenBank Accession Number: BC008861	Purification Method: Protein G purification
Size: 150ul , Concentration: 1000 µg/ml by Nanodrop;	GeneID (NCBI): 9114	CloneNo.: 1G7A12
Source: Mouse	Full Name: ATPase, H ⁺ transporting, lysosomal 38kDa, V0 subunit d1	Recommended Dilutions: WB 1:5000-1:20000 IP 0.5-4.0 ug for 1.0-3.0 mg of total protein lysate IHC 1:250-1:1000 IF 1:1200-1:4800
Isotype: IgG1	Calculated MW: 351 aa, 40 kDa	
Immunogen Catalog Number: AG13012	Observed MW: 37-41 kDa	

Applications

Tested Applications:

IF, IHC, IP, WB, ELISA

Species Specificity:

Human, Mouse, Rat, Pig, Rabbit, Chicken, Zebrafish

Note-IHC: suggested antigen retrieval with TE buffer pH 9.0; (*) Alternatively, antigen retrieval may be performed with citrate buffer pH 6.0

Positive Controls:

WB : HeLa cells, Jurkat cells, K-562 cells, pig brain tissue, rabbit brain tissue, rat brain tissue, mouse brain tissue, chicken brain tissue, zebrafish tissue

IP : HeLa cells,

IHC : mouse kidney tissue,

IF : HeLa cells,

Background Information

ATP6V0D1(V-type proton ATPase subunit d 1) is also named as ATP6D, VPATPD and belongs to the V-ATPase V0D/AC39 subunit family. It is responsible for acidifying a variety of intracellular compartments in eukaryotic cells, thus providing most of the energy required for transport processes in the vacuolar system.

Storage

Storage:

Store at -20°C. Stable for one year after shipment.

Storage Buffer:

PBS with 0.02% sodium azide and 50% glycerol pH 7.3.

Aliquoting is unnecessary for -20°C storage

*** 20ul sizes contain 0.1% BSA

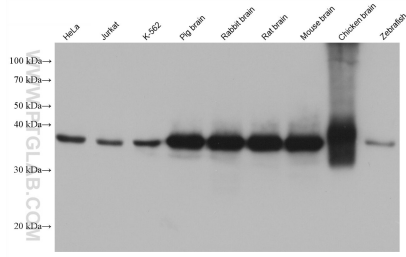
For technical support and original validation data for this product please contact:

T: 1 (888) 4PTGLAB (1-888-478-4522) (toll free in USA), or 1(312) 455-8498 (outside USA)

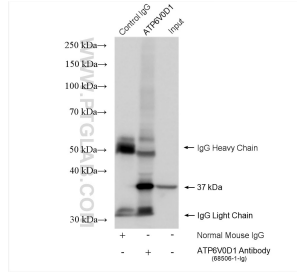
E: proteintech@ptglab.com
W: ptglab.com

This product is exclusively available under Proteintech Group brand and is not available to purchase from any other manufacturer.

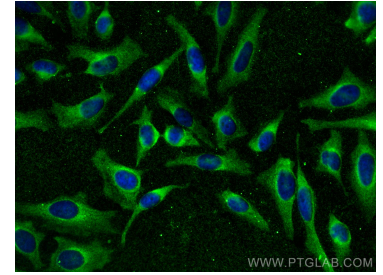
Selected Validation Data



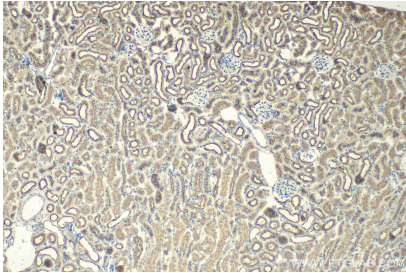
Various lysates were subjected to SDS PAGE followed by western blot with 68506-1-Ig (ATP6VOD1 antibody) at dilution of 1:10000 incubated at room temperature for 1.5 hours.



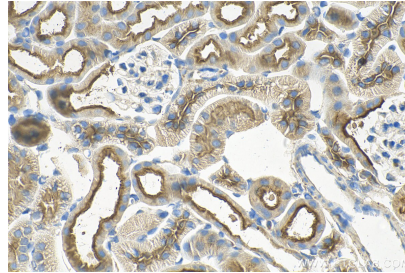
IP result of anti-ATP6VOD1(IP:68506-1-Ig, 4ug; Detection:68506-1-Ig 1:3000) with HeLa cells lysate 1520 ug.



Immunofluorescent analysis of (-20°C Methanol) fixed HeLa cells using ATP6VOD1 antibody (68506-1-Ig, Clone: 1G7A12) at dilution of 1:2400 and CoraLite@488-Conjugated AffiniPure Goat Anti-Mouse IgG(H+L).



Immunohistochemical analysis of paraffin-embedded mouse kidney tissue slide using 68506-1-Ig (ATP6VOD1 antibody) at dilution of 1:500 (under 10x lens). Heat mediated antigen retrieval with Tris-EDTA buffer (pH 9.0).



Immunohistochemical analysis of paraffin-embedded mouse kidney tissue slide using 68506-1-Ig (ATP6VOD1 antibody) at dilution of 1:500 (under 40x lens). Heat mediated antigen retrieval with Tris-EDTA buffer (pH 9.0).