

For Research Use Only

# Lactotransferrin/LTF Monoclonal antibody, PBS Only

Catalog Number: 68509-1-PBS



## Basic Information

### Catalog Number:

68509-1-PBS

### Size:

100ug , Concentration: 1 mg/ml by Nanodrop;

### Source:

Mouse

### Isotype:

IgG2a

### Immunogen Catalog Number:

AG33645

### GenBank Accession Number:

BC015822

### GeneID (NCBI):

4057

### UNIPROT ID:

P02788

### Full Name:

lactotransferrin

### Calculated MW:

80 kDa

### Observed MW:

78 kDa

### Purification Method:

Protein A purification

### CloneNo.:

3D1G3

## Applications

### Tested Applications:

WB, IHC, Indirect ELISA

### Species Specificity:

human

## Background Information

LTF (Lactotransferrin) is also named as GIG12, LF and belongs to the transferrin family. It is an iron binding transport protein which can bind two atoms of ferric iron in association with the binding of an anion, usually bicarbonate. LTF is also an important protein component of the innate immune system that is broadly distributed within the body fluids. It can contribute to the activation of both the innate and adaptive immune responses by promoting the recruitment of leukocytes and activation of dendritic cells (PMID:18453607). This protein has 2 isoforms produced by alternative promoter usage. The human LTF can be isolated two fragments, an N-terminal tryptic fragment having an MW of 30 kDa and a C-terminal tryptic fragment having an MW of 50 kDa by a mild tryptic digest (PMID:3790094).

## Storage

### Storage:

Store at -80°C.

### Storage Buffer:

PBS Only

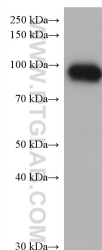
For technical support and original validation data for this product please contact:

T: 1 (888) 4PTGLAB (1-888-478-4522) (toll free in USA), or 1(312) 455-8498 (outside USA)

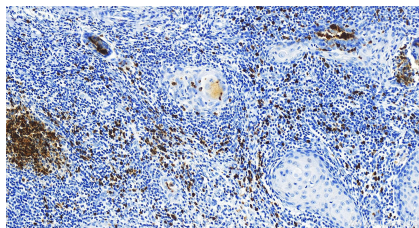
E: [proteintech@ptglab.com](mailto:proteintech@ptglab.com)  
W: [ptglab.com](http://ptglab.com)

This product is exclusively available under Proteintech Group brand and is not available to purchase from any other manufacturer.

## Selected Validation Data



human saliva were subjected to SDS PAGE followed by western blot with 68509-1-Ig (Lactoferrin antibody) at dilution of 1:20000 incubated at room temperature for 1.5 hours. This data was developed using the same antibody clone with 68509-1-PBS in a different storage buffer formulation.



Immunohistochemical analysis of paraffin-embedded skin cancer slide using 68509-1-Ig (LTF antibody) at dilution of 1:4000 (under 20x lens). Heat mediated antigen retrieval with Tris-EDTA buffer (pH 9.0). This data was developed using the same antibody clone with 68509-1-PBS in a different storage buffer formulation.