

For Research Use Only

CDCA8 Monoclonal antibody

Catalog Number: 68510-1-Ig



Basic Information

Catalog Number: 68510-1-Ig	GenBank Accession Number: BC016944	Purification Method: Protein A purification
Size: 150ul , Concentration: 1000 ug/ml by Nanodrop;	GeneID (NCBI): 55143	CloneNo.: 2A10C9
Source: Mouse	UNIPROT ID: Q53HL2	Recommended Dilutions: WB 1:5000-1:50000 IF/ICC 1:400-1:1600
Isotype: IgG1	Full Name: cell division cycle associated 8	
Immunogen Catalog Number: AG3136	Calculated MW: 280 aa, 31 kDa	
	Observed MW: 31-38 kDa	

Applications

Tested Applications: WB, IF/ICC, ELISA	Positive Controls:
Species Specificity: human	WB : MDA-MB-468 cells, A431 cells, HEK-293 cell, K-562 cells, Ramos cells, Daudi cells
	IF/ICC : A549 cells, A431 cells

Background Information

CDCA8, also named as Borealin, Dasra-B and PESCRG3, is a component of the chromosomal passenger complex (CPC), a complex that acts as a key regulator of mitosis. The predicted molecular weight of CDCA8 is about 31 kDa. This protein can be migrated to 35-40 kDa with phosphor modification or ~50 kDa with SUMO modification.

Storage

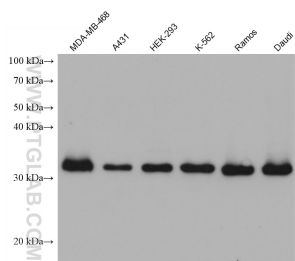
Storage:
Store at -20°C. Stable for one year after shipment.
Storage Buffer:
PBS with 0.02% sodium azide and 50% glycerol pH 7.3.
Aliquoting is unnecessary for -20°C storage

*** 20ul sizes contain 0.1% BSA

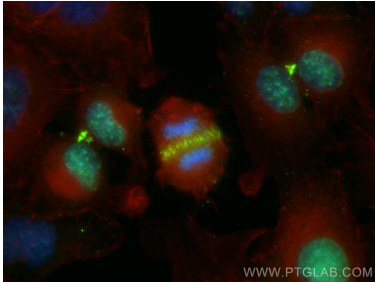
For technical support and original validation data for this product please contact:
T: 1 (888) 4PTGLAB (1-888-478-4522) (toll free in USA), or 1(312) 455-8498 (outside USA)
E: proteintech@ptglab.com
W: ptglab.com

This product is exclusively available under Proteintech Group brand and is not available to purchase from any other manufacturer.

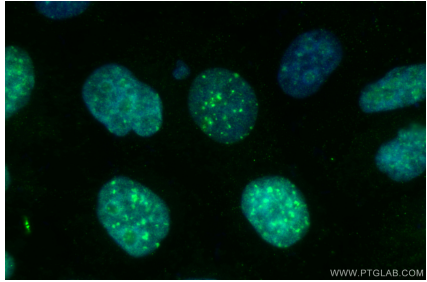
Selected Validation Data



Various lysates were subjected to SDS PAGE followed by western blot with 68510-1-Ig (CDCA8 antibody) at dilution of 1:10000 incubated at room temperature for 1.5 hours.



Immunofluorescent analysis of (4% PFA) fixed A549 cells using CDCA8 antibody (68510-1-Ig, Clone: 2A10C9) at dilution of 1:800 and Coralite®488-Conjugated Goat Anti-Mouse IgG(H+L) (SA00013-1), CL594-Phalloidin (red).



Immunofluorescent analysis of (4% PFA) fixed A431 cells using CDCA8 antibody (68510-1-Ig, Clone: 2A10C9) at dilution of 1:800 and Coralite®488-Conjugated AffiniPure Goat Anti-Mouse IgG(H+L) (SA00013-1).