

DSG2 Monoclonal antibody, PBS Only

Catalog Number: 68515-1-PBS

Basic Information

Catalog Number: 68515-1-PBS	GenBank Accession Number: BC099655	Purification Method: Protein A purification
Size: 100ug , Concentration: 1mg/ml by Nanodrop;	GeneID (NCBI): 1829	CloneNo.: 1B8C3
Source: Mouse	UNIPROT ID: Q14126	
Isotype: IgG1	Full Name: desmoglein 2	
Immunogen Catalog Number: AG20633	Calculated MW: 1118 aa, 122 kDa	
	Observed MW: 145-150 kDa	

Applications

Tested Applications:
WB, Cytometric bead array, Indirect ELISA

Species Specificity:
human

Product Information

68515-1-PBS targets DSG2 as part of a matched antibody pair:

MP51241-1: 68515-1-PBS capture and 68515-2-PBS detection (validated in Cytometric bead array)

Unconjugated mouse monoclonal antibody pair in PBS only (BSA and azide free) storage buffer at a concentration of 1 mg/mL, ready for conjugation.

This conjugation ready format makes antibodies ideal for use in many applications including: ELISAs, multiplex assays requiring matched pairs, mass cytometry, and multiplex imaging applications. Antibody use should be optimized by the end user for each application and assay.

Background Information

Desmosomes are cell-cell junctions between epithelial, myocardial, and certain other cell types. Desmosomal cadherins, consisting of four desmogleins (DSG1-4) and three desmocollins (DSC1-3) in humans, mediate adhesion through calcium-dependent homophilic/heterophilic interactions. DSG2 is a single-pass transmembrane glycoprotein that is widely expressed in epithelial and non-epithelial tissues, such as the intestine, epidermis, testis, and heart (PMID:21715983). Defects in DSG2 are the cause of familial arrhythmogenic right ventricular dysplasia type 10 (ARVD10), and genetic variations in DSG2 are the cause of susceptibility to cardiomyopathy dilated type 1BB (CMD1BB).

Storage

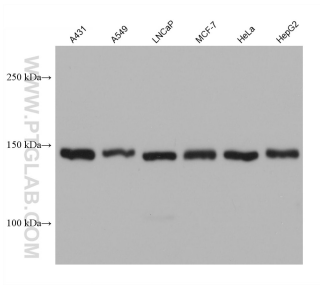
Storage:
Store at -80°C.

Storage Buffer:
PBS Only

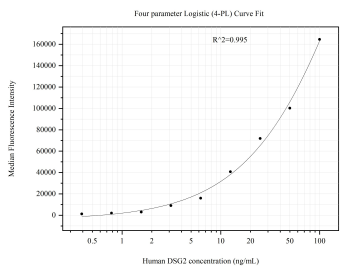
For technical support and original validation data for this product please contact:
T: 1 (888) 4PTGLAB (1-888-478-4522) (toll free in USA), or 1(312) 455-8498 (outside USA)
E: proteintech@ptglab.com
W: ptglab.com

This product is exclusively available under Proteintech Group brand and is not available to purchase from any other manufacturer.

Selected Validation Data



Various lysates were subjected to SDS PAGE followed by western blot with 68515-1-Ig (DSG2 antibody) at dilution of 1:5000 incubated at room temperature for 1.5 hours. This data was developed using the same antibody clone with 68515-1-PBS in a different storage buffer formulation.



Cytometric bead array standard curve of MP51241-1, DSG2 Monoclonal Matched Antibody Pair, PBS Only. Capture antibody: 68515-1-PBS. Detection antibody: 68515-2-PBS. Standard: Ag20633. Range: 0.391-100 ng/mL