

For Research Use Only

ATL3 Monoclonal antibody, PBS Only (Detector)

Catalog Number: 68516-1-PBS

Featured Product



Basic Information

Catalog Number:

68516-1-PBS

Size:

100ug, Concentration: 1mg/ml by Nanodrop;

Source:

Mouse

Isotype:

IgG1

Immunogen Catalog Number:

AG10248

GenBank Accession Number:

BC077727

GeneID (NCBI):

25923

UNIPROT ID:

Q6DD88

Full Name:

atlastin GTPase 3

Calculated MW:

541 aa, 61 kDa

Observed MW:

61 kDa

Purification Method:

Protein G purification

CloneNo.:

2E7C4

Applications

Tested Applications:

WB, Cytometric bead array, Indirect ELISA

Species Specificity:

human, mouse, rat, rabbit

Product Information

68516-1-PBS targets ATL3 as part of a matched antibody pair:

MP50703-1: 68516-2-PBS capture and 68516-1-PBS detection (validated in Cytometric bead array)

Unconjugated mouse monoclonal antibody pair in PBS only (BSA and azide free) storage buffer at a concentration of 1 mg/mL, ready for conjugation.

This conjugation ready format makes antibodies ideal for use in many applications including: ELISAs, multiplex assays requiring matched pairs, mass cytometry, and multiplex imaging applications. Antibody use should be optimized by the end user for each application and assay.

Background Information

ATL3, belonging to a class of dynamin-like GTPase, was reported to mediate ER fusion. ATL3 is required for the proper formation of the network of interconnected tubules of the endoplasmic reticulum. ATL3 functions as a receptor for ER-phagy, promoting tubular ER degradation upon starvation. Mutations in this gene may be associated with hereditary sensory neuropathy type IF.

Storage

Storage:

Store at -80°C.

Storage Buffer:

PBS Only

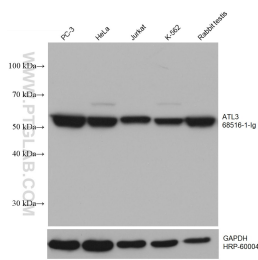
For technical support and original validation data for this product please contact:

T: 1 (888) 4PTGLAB (1-888-478-4522) (toll free in USA), or 1(312) 455-8498 (outside USA)

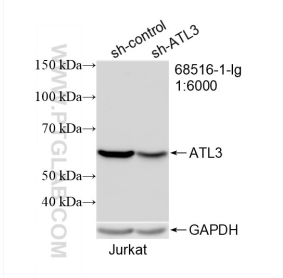
E: proteintech@ptglab.com
W: ptglab.com

This product is exclusively available under Proteintech Group brand and is not available to purchase from any other manufacturer.

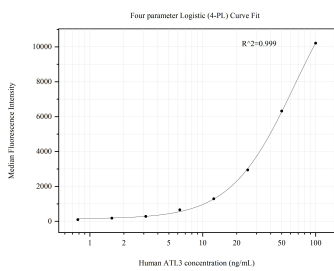
Selected Validation Data



Various lysates were subjected to SDS PAGE followed by western blot with 68516-1-Ig (ATL3 antibody) at dilution of 1:20000 incubated at room temperature for 1.5 hours. This data was developed using the same antibody clone with 68516-1-PBS in a different storage buffer formulation.



WB result of ATL3 antibody (68516-1-Ig; 1:600; incubated at room temperature for 1.5 hours) with sh-Control and sh-ATL3 transfected Jurkat cells. This data was developed using the same antibody clone with 68516-1-PBS in a different storage buffer formulation.



Cytometric bead array standard curve of MP50703-1, ATL3 Monoclonal Matched Antibody Pair, PBS Only. Capture antibody: 68516-2-PBS. Detection antibody: 68516-1-PBS. Standard: Ag10248. Range: 0.781-100 ng/mL