

For Research Use Only

AFG3L2 Monoclonal antibody

Catalog Number: 68517-1-Ig



Basic Information

| | | |
|---|--|---|
| Catalog Number: 68517-1-Ig | GenBank Accession Number: BC065016 | Purification Method: Protein A purification |
| Size: 150ul , Concentration: 1000 µg/ml by Nanodrop; | GeneID (NCBI): 10939 | CloneNo.: 1C12F3 |
| Source: Mouse | Full Name: AFG3 ATPase family gene 3-like 2 (yeast) | Recommended Dilutions: WB 1:1000-1:8000 |
| Isotype: IgG2a | Calculated MW: 88 kDa | |
| Immunogen Catalog Number: AG7180 | Observed MW: 80 kDa | |

Applications

Tested Applications:
WB, ELISA

Species Specificity:
Human, mouse, rat, pig, rabbit

Positive Controls:

WB : HeLa cells, LNCaP cells, HepG2 cells, Jurkat cells, K-562 cells, pig heart tissue, rabbit heart tissue, rat heart tissue, mouse heart tissue

Background Information

AFG3L2 is the catalytic subunit of the m-AAA protease, an ATP-dependent proteolytic complex of the mitochondrial inner membrane that degrades misfolded proteins and regulates ribosome assembly (PMID:17101804). Human AFG3L2 is an 80-kDa protein encoded by a 17-exon gene and highly and selectively expressed in human cerebellar Purkinje cells (PMID:20208537) and it can exist as a truncated 65 kDa protein (PMID:18337413). Defects in AFG3L2 are the cause of spinocerebellar ataxia type 28 (SCA28) and spastic ataxia autosomal recessive type 5 (SPAX5).

Storage

Storage:

Store at -20°C. Stable for one year after shipment.

Storage Buffer:

PBS with 0.02% sodium azide and 50% glycerol pH 7.3.

Aliquoting is unnecessary for -20°C storage

***** 20ul sizes contain 0.1% BSA**

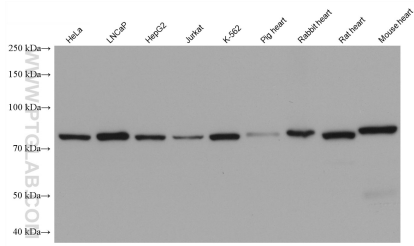
For technical support and original validation data for this product please contact:

T: 1 (888) 4PTGLAB (1-888-478-4522) (toll free
in USA), or 1(312) 455-8498 (outside USA)

E: proteintech@ptglab.com
W: ptglab.com

This product is exclusively available under Proteintech Group brand and is not available to purchase from any other manufacturer.

Selected Validation Data



Various lysates were subjected to SDS PAGE followed by western blot with 68517-1-Ig (AFG3L2 antibody) at dilution of 1:4000 incubated at room temperature for 1.5 hours.