

For Research Use Only

# CAMK2G Monoclonal antibody

Catalog Number: 68519-1-Ig



## Basic Information

|   |  |   |
|---|--|---|
| <b>Catalog Number:</b><br>68519-1-Ig                              | <b>GenBank Accession Number:</b><br>BC034044                                 | <b>Purification Method:</b><br>Protein G purification |
| <b>Size:</b><br>150ul , Concentration: 1000 µg/ml by<br>Nanodrop; | <b>GeneID (NCBI):</b><br>818   | <b>CloneNo.:</b><br>1C12H10                           |
| <b>Source:</b><br>Mouse   | <b>Full Name:</b><br>calcium/calmodulin-dependent<br>protein kinase II gamma | <b>Recommended Dilutions:</b><br>WB 1:5000-1:50000    |
| <b>Isotype:</b><br>IgG1   | <b>Calculated MW:</b><br>527 aa, 59 kDa                                      |   |
| <b>Immunogen Catalog Number:</b><br>AG23180                       | <b>Observed MW:</b><br>64 kDa  |   |

## Applications

|   |   |
|---|---|
| <b>Tested Applications:</b><br>WB, ELISA                      | <b>Positive Controls:</b><br>WB : PC-3 cells, pig brain tissue, LNCaP cells, HCT 116<br>cells, rabbit brain tissue, rat brain tissue, mouse brain<br>tissue |
| <b>Species Specificity:</b><br>Human, mouse, rat, pig, rabbit |   |

## Background Information

CaMKII gamma, also named CAMKG or CAMK2G, belongs to the protein kinase superfamily, CAMK Ser/Thr protein kinase family, and CaMK subfamily. CAMK2 is a prominent kinase in the central nervous system that may function in long-term potentiation and neurotransmitter release. CAMK2G is expressed in human beta cells as a candidate gene for Type II (non-insulin-dependent) diabetes mellitus. Some studies can be used to assess the role of CAMK2G in the susceptibility to Type II diabetes (PMID: 12032636). CAMK2G has some isoforms with the MW of 55-66 kDa and this antibody can recognize all the isoforms of CAMK2G. This antibody may have cross-reaction with CAMK2A/B/D due to the high homology.

## Storage

**Storage:**  
Store at -20°C. Stable for one year after shipment.  
**Storage Buffer:**  
PBS with 0.02% sodium azide and 50% glycerol pH 7.3.  
Aliquoting is unnecessary for -20°C storage

\*\*\* 20ul sizes contain 0.1% BSA

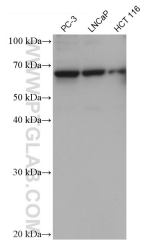
For technical support and original validation data for this product please contact:

T: 1 (888) 4PTGLAB (1-888-478-4522) (toll free  
in USA), or 1(312) 455-8498 (outside USA)

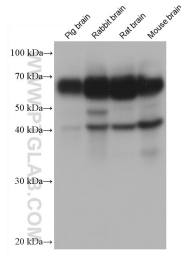
E: proteintech@ptglab.com  
W: ptglab.com

This product is exclusively available under Proteintech Group brand and is not available to purchase from any other manufacturer.

## Selected Validation Data



Various lysates were subjected to SDS PAGE followed by western blot with 68519-1-Ig (CAMK2G antibody) at dilution of 1:10000 incubated at room temperature for 1.5 hours.



Various lysates were subjected to SDS PAGE followed by western blot with 68519-1-Ig (CAMK2G antibody) at dilution of 1:10000 incubated at room temperature for 1.5 hours.