

For Research Use Only

CstF-64 Monoclonal antibody

Catalog Number: 68520-1-Ig



Basic Information

Catalog Number: 68520-1-Ig	GenBank Accession Number: BC017712	Purification Method: Protein G purification
Size: 150ul , Concentration: 1000 µg/ml by Nanodrop;	GeneID (NCBI): 1478	CloneNo.: 1C5G2
Source: Mouse	Full Name: cleavage stimulation factor, 3' pre-RNA, subunit 2, 64kDa	Recommended Dilutions: WB 1:2000-1:10000
Isotype: IgG1	Calculated MW: 61 kDa	
Immunogen Catalog Number: AG33751	Observed MW: 64-70 kDa	

Applications

Tested Applications:
WB, ELISA

Species Specificity:
Human, Mouse, Rat

Positive Controls:

WB: A549 cells, LNCaP cells, HeLa cells, HEK-293 cells, HepG2 cells, Jurkat cells, K-562 cells, HSC-T6 cells, NIH/3T3 cells

Background Information

Cleavage stimulation factor 64 kDa subunit is a protein that in humans is encoded by the CSTF2 gene. This gene encodes a nuclear protein with an RRM (RNA recognition motif) domain. The protein is a member of the cleavage stimulation factor (CSTF) complex that is involved in the 3' end cleavage and polyadenylation of pre-mRNAs. Specifically, this protein binds GU-rich elements within the 3'-untranslated region of mRNAs.

Storage

Storage:
Store at -20°C. Stable for one year after shipment.

Storage Buffer:
PBS with 0.02% sodium azide and 50% glycerol pH 7.3.

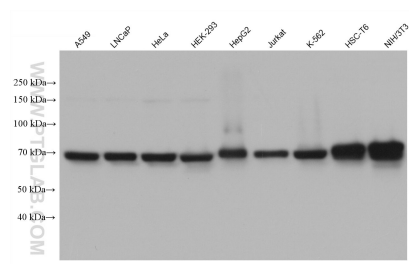
Aliquoting is unnecessary for -20°C storage

*** 20ul sizes contain 0.1% BSA

For technical support and original validation data for this product please contact:
T: 1 (888) 4PTGLAB (1-888-478-4522) (toll free in USA), or 1(312) 455-8498 (outside USA) E: proteintech@ptglab.com
W: ptglab.com

This product is exclusively available under Proteintech Group brand and is not available to purchase from any other manufacturer.

Selected Validation Data



Various lysates were subjected to SDS PAGE followed by western blot with 68520-1-Ig (CstF-64 antibody) at dilution of 1:5000 incubated at room temperature for 1.5 hours.