

For Research Use Only

CstF-64 Monoclonal antibody, PBS Only



Catalog Number: 68520-1-PBS

Basic Information

Catalog Number: 68520-1-PBS	GenBank Accession Number: BC017712	Purification Method: Protein A purification
Size: 100ug , Concentration: 1 mg/ml by Nanodrop;	GeneID (NCBI): 1478	CloneNo.: 1C5G2
Source: Mouse	UNIPROT ID: P33240	
Isotype: IgG1	Full Name: cleavage stimulation factor, 3' pre-RNA, subunit 2, 64kDa	
Immunogen Catalog Number: AG33751	Calculated MW: 61 kDa	
	Observed MW: 64-70 kDa	

Applications

Tested Applications:
WB, Indirect ELISA

Species Specificity:
Human, Mouse, Rat

Background Information

Cleavage stimulation factor 64 kDa subunit is a protein that in humans is encoded by the CSTF2 gene. This gene encodes a nuclear protein with an RRM (RNA recognition motif) domain. The protein is a member of the cleavage stimulation factor (CSTF) complex that is involved in the 3' end cleavage and polyadenylation of pre-mRNAs. Specifically, this protein binds GU-rich elements within the 3'-untranslated region of mRNAs.

Storage

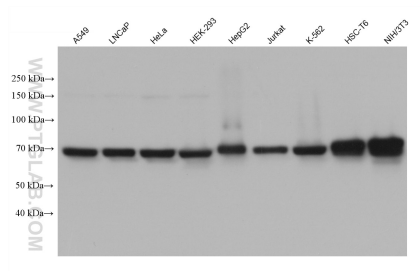
Storage:
Store at -80°C.

Storage Buffer:
PBS Only

For technical support and original validation data for this product please contact:
T: 1 (888) 4PTGLAB (1-888-478-4522) (toll free in USA), or 1(312) 455-8498 (outside USA)
E: proteintech@ptglab.com
W: ptglab.com

This product is exclusively available under Proteintech Group brand and is not available to purchase from any other manufacturer.

Selected Validation Data



Various lysates were subjected to SDS PAGE followed by western blot with 68520-1-Ig (CstF-64 antibody) at dilution of 1:5000 incubated at room temperature for 1.5 hours. This data was developed using the same antibody clone with 68520-1-PBS in a different storage buffer formulation.