

For Research Use Only

# MTCO2 Monoclonal antibody

Catalog Number: **68527-1-Ig** **Featured Product**



## Basic Information

Catalog Number:

68527-1-Ig

Size:

150ul , Concentration: 1000 ug/ml by Nanodrop;

Source:

Mouse

Isotype:

IgG1

GenBank Accession Number:

YP\_003024029

GeneID (NCBI):

4513

UNIPROT ID:

P00403

Full Name:

cytochrome c oxidase II

Calculated MW:

26 kDa

Observed MW:

23-26 kDa

Purification Method:

Protein G purification

CloneNo.:

10G14F4

Recommended Dilutions:

WB 1:5000-1:50000

## Applications

Tested Applications:

WB, ELISA

Species Specificity:

human

Positive Controls:

WB : U2OS cells, 143B cells, A431 cells, HeLa cells, HepG2 cells, Jurkat cells, LNCaP cells, K-562 cells

## Background Information

MTCO2, also named as COII, COXII, and COX2, belongs to the cytochrome c oxidase subunit 2 family. It is the component of the respiratory chain that catalyzes the reduction of oxygen to water. Subunits 1-3 form the functional core of the enzyme complex. Subunit 2 transfers the electrons from cytochrome c via its binuclear copper A center to the bimetallic center of the catalytic subunit 1. Defects in COX2 are a cause of mitochondrial complex IV deficiency (MT-C4D).

## Storage

Storage:

Store at -20°C. Stable for one year after shipment.

Storage Buffer:

PBS with 0.02% sodium azide and 50% glycerol, pH7.3

Aliquoting is unnecessary for -20°C storage

\*\*\* 20ul sizes contain 0.1% BSA

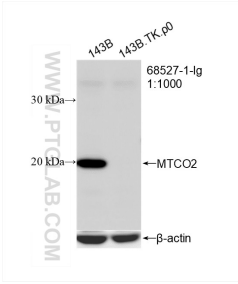
For technical support and original validation data for this product please contact:

T: 1 (888) 4PTGLAB (1-888-478-4522) (toll free in USA), or 1(312) 455-8498 (outside USA)

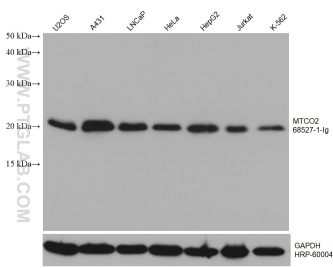
E: [proteintech@ptglab.com](mailto:proteintech@ptglab.com)  
W: [ptglab.com](http://ptglab.com)

This product is exclusively available under Proteintech Group brand and is not available to purchase from any other manufacturer.

Selected Validation Data



WB result of MTCO2 antibody (MTCO2; 1:1000; incubated at room temperature for 1.5 hours) with 143B and 143B.TK.p0 cell. 143B is wild-type cell line, 143B.TK.p0 is mtDNA deletion cell line.



Various lysates were subjected to SDS PAGE followed by western blot with 68527-1-Ig (MTCO2 antibody) at dilution of 1:10000 incubated at room temperature for 1.5 hours.