

For Research Use Only

FSTL1 Monoclonal antibody

Catalog Number: 68528-1-Ig



Basic Information

Catalog Number: 68528-1-Ig	GenBank Accession Number: BC000055	Purification Method: Protein A purification
Size: 150ul , Concentration: 1000 µg/ml by Nanodrop;	GeneID (NCBI): 11167	CloneNo.: 1G5G1
Source: Mouse	Full Name: follistatin-like 1	Recommended Dilutions: WB 1:2000-1:10000
Isotype: IgG2a	Calculated MW: 308 aa, 35 kDa	
Immunogen Catalog Number: AG33795	Observed MW: 50-55 kDa	

Applications

Tested Applications: WB, ELISA	Positive Controls: WB : HEK-293 cells, MCF-7 cells, A2780 cells, HeLa cells, U2OS cells, JAR cells, C6 cells, 4T1 cells
Species Specificity: Human, mouse, rat	

Background Information

Follistatin-like 1 (FSTL1), initially discovered as a TGF- β 1-induced gene, encodes a 308 amino acid secreted 45-55 kDa glycoprotein with a follistatin domain and two non-functional calcium-binding motifs. FSTL1 has been reported to be involved in the fate determination and maturation of epithelial cells. Ablation of the FSTL1 gene in the mouse results in several structural developmental defects and neonatal lethality due to respiratory failure, demonstrating its functional importance. FSTL1 has been reported to exhibit both pro- and anti-inflammatory actions, with a specific anti-apoptotic and protective effect in cardiac or renal cell injury. Zwijsen et al. (1994) detected several isoforms of FSTL1 with molecular masses of 40 to 48 kD which differs from the 50- to 55-kD products detected by Tanaka et al. (1998) (OMIM).

Storage

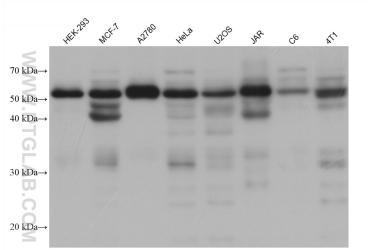
Storage:
Store at -20°C. Stable for one year after shipment.
Storage Buffer:
PBS with 0.02% sodium azide and 50% glycerol pH 7.3.
Aliquoting is unnecessary for -20°C storage

*** 20ul sizes contain 0.1% BSA

For technical support and original validation data for this product please contact:
T: 1 (888) 4PTGLAB (1-888-478-4522) (toll free in USA), or 1(312) 455-8498 (outside USA) E: proteintech@ptglab.com W: ptglab.com

This product is exclusively available under Proteintech Group brand and is not available to purchase from any other manufacturer.

Selected Validation Data



Various lysates were subjected to SDS PAGE followed by western blot with 68528-1-Ig (FSTL1 antibody) at dilution of 1:5000 incubated at room temperature for 1.5 hours.