

# FSTL1 Monoclonal antibody, PBS Only

Catalog Number: 68528-1-PBS

## Basic Information

<b>Catalog Number:</b> 68528-1-PBS	<b>GenBank Accession Number:</b> BC000055	<b>Purification Method:</b> Protein A purification
<b>Size:</b> 100ug , Concentration: 1 mg/ml by Nanodrop;	<b>GeneID (NCBI):</b> 11167	<b>CloneNo.:</b> 1G5G1
<b>Source:</b> Mouse	<b>UNIPROT ID:</b> Q12841	
<b>Isotype:</b> IgG2a	<b>Full Name:</b> follistatin-like 1	
<b>Immunogen Catalog Number:</b> AG33795	<b>Calculated MW:</b> 308 aa, 35 kDa	
	<b>Observed MW:</b> 50-55 kDa	

## Applications

**Tested Applications:**  
WB, Indirect ELISA

**Species Specificity:**  
Human, mouse, rat

## Background Information

Follistatin-like 1 (FSTL1), initially discovered as a TGF- $\beta$ 1-induced gene, encodes a 308 amino acid secreted 45-55 kDa glycoprotein with a follistatin domain and two non-functional calcium-binding motifs. FSTL1 has been reported to be involved in the fate determination and maturation of epithelial cells. Ablation of the FSTL1 gene in the mouse results in several structural developmental defects and neonatal lethality due to respiratory failure, demonstrating its functional importance. FSTL1 has been reported to exhibit both pro- and anti-inflammatory actions, with a specific anti-apoptotic and protective effect in cardiac or renal cell injury. Zwijsen et al. (1994) detected several isoforms of FSTL1 with molecular masses of 40 to 48 kD which differs from the 50- to 55-kD products detected by Tanaka et al. (1998) (OMIM).

## Storage

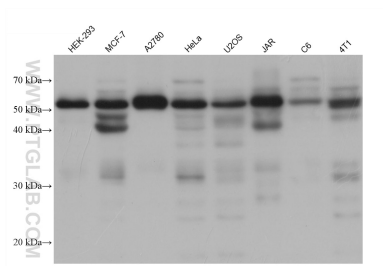
**Storage:**  
Store at -80°C.

**Storage Buffer:**  
PBS Only

For technical support and original validation data for this product please contact:  
T: 1 (888) 4PTGLAB (1-888-478-4522) (toll free in USA), or 1(312) 455-8498 (outside USA)  
E: [proteintech@ptglab.com](mailto:proteintech@ptglab.com)  
W: [ptglab.com](http://ptglab.com)

This product is exclusively available under Proteintech Group brand and is not available to purchase from any other manufacturer.

## Selected Validation Data



Various lysates were subjected to SDS PAGE followed by western blot with 68528-1-Ig (FSTL1 antibody) at dilution of 1:5000 incubated at room temperature for 1.5 hours. This data was developed using the same antibody clone with 68528-1-PBS in a different storage buffer formulation.