

For Research Use Only

# UQCRFS1 Monoclonal antibody, PBS Only

Catalog Number: 68529-1-PBS



## Basic Information

<b>Catalog Number:</b> 68529-1-PBS	<b>GenBank Accession Number:</b> BC010035	<b>Purification Method:</b> Protein G purification
<b>Size:</b> 100ug , Concentration: 1mg/ml by Nanodrop;	<b>GeneID (NCBI):</b> 7386	<b>CloneNo.:</b> 1F11C4
<b>Source:</b> Mouse	<b>UNIPROT ID:</b> P47985	
<b>Isotype:</b> IgG1	<b>Full Name:</b> ubiquinol-cytochrome c reductase, Rieske iron-sulfur polypeptide 1	
<b>Immunogen Catalog Number:</b> AG13307	<b>Calculated MW:</b> 30 kDa	
	<b>Observed MW:</b> 25 kDa	

## Applications

**Tested Applications:**  
WB, IF/ICC, Indirect ELISA

**Species Specificity:**  
human, mouse, rat, pig, rabbit

## Background Information

The ubiquinol cytochrome c reductase UQCRFS1 is a key subunit of the cytochrome bc1 complex (complex III) of the mitochondrial respiratory chain. The UQCRFS1 gene encode a 30 kDa protein with a transit peptide and it appears to be involved in development of more aggressive phenotype of breast cancer(PMID:15047214). UQCRFS1 is also named as RISP, complex III subunit 5, cytochrome b-c1 complex subunit 5 and rieske iron-sulfur protein.

## Storage

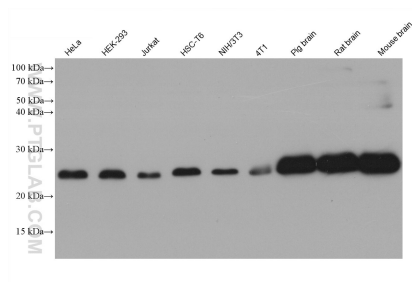
**Storage:**  
Store at -80°C.

**Storage Buffer:**  
PBS Only

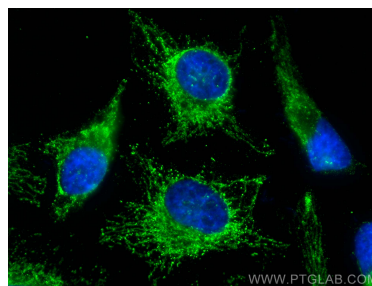
For technical support and original validation data for this product please contact:  
T: 1 (888) 4PTGLAB (1-888-478-4522) (toll free in USA), or 1(312) 455-8498 (outside USA)  
E: [proteintech@ptglab.com](mailto:proteintech@ptglab.com)  
W: [ptglab.com](http://ptglab.com)

This product is exclusively available under Proteintech Group brand and is not available to purchase from any other manufacturer.

## Selected Validation Data



Various lysates were subjected to SDS PAGE followed by western blot with 68529-1-Ig (UQCRFS1 antibody) at dilution of 1:20000 incubated at room temperature for 1.5 hours. This data was developed using the same antibody clone with 68529-1-PBS in a different storage buffer formulation.



Immunofluorescent analysis of (4% PFA) fixed HeLa cells using UQCRFS1 antibody (68529-1-Ig, Clone: 1F11C4) at dilution of 1:400 and CoraLite®488-Conjugated AffiniPure Goat Anti-Mouse IgG(H+L). This data was developed using the same antibody clone with 68529-1-PBS in a different storage buffer formulation.