

For Research Use Only

IKBKE Monoclonal antibody, PBS Only



Catalog Number: 68531-1-PBS

Basic Information

Catalog Number:

68531-1-PBS

Size:

100ug , Concentration: 1 mg/ml by Nanodrop;

Source:

Mouse

Isotype:

IgG1

Immunogen Catalog Number:

AG30374

GenBank Accession Number:

BC107812

GeneID (NCBI):

9641

UNIPROT ID:

Q14164

Full Name:

inhibitor of kappa light polypeptide gene enhancer in B-cells, kinase epsilon

Calculated MW:

716 aa, 80 kDa

Observed MW:

80 kDa

Purification Method:

Protein G purification

CloneNo.:

3E4H7

Applications

Tested Applications:

WB, Indirect ELISA

Species Specificity:

Human

Background Information

IKBKE is a serine/threonine kinase that plays an essential role in regulating inflammatory responses to viral infection, through the activation of the type I IFN, NF-kappa-B and STAT signaling. It is also involved in TNFA and inflammatory cytokines, like Interleukin-1, signaling.

Storage

Storage:

Store at -80°C.

Storage Buffer:

PBS Only

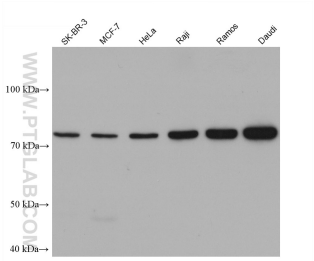
For technical support and original validation data for this product please contact:

T: 1 (888) 4PTGLAB (1-888-478-4522) (toll free in USA), or 1(312) 455-8498 (outside USA)

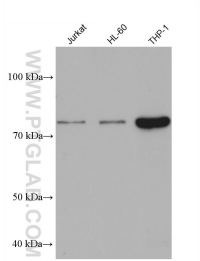
E: proteintech@ptglab.com
W: ptglab.com

This product is exclusively available under Proteintech Group brand and is not available to purchase from any other manufacturer.

Selected Validation Data



Various lysates were subjected to SDS PAGE followed by western blot with 68531-1-Ig (IKBKE antibody) at dilution of 1:10000 incubated at room temperature for 1.5 hours. This data was developed using the same antibody clone with 68531-1-PBS in a different storage buffer formulation.



Various lysates were subjected to SDS PAGE followed by western blot with 68531-1-Ig (IKBKE antibody) at dilution of 1:10000 incubated at room temperature for 1.5 hours. This data was developed using the same antibody clone with 68531-1-PBS in a different storage buffer formulation.