

For Research Use Only

PRMT5 Monoclonal antibody

Catalog Number: 68534-1-Ig



Basic Information

| | | |
|---|---|---|
| Catalog Number: 68534-1-Ig | GenBank Accession Number: BC025979 | Purification Method: Protein G purification |
| Size: 150ul , Concentration: 1000 µg/ml by Nanodrop; | GeneID (NCBI): 10419 | CloneNo.: 4A1B5 |
| Source: Mouse | Full Name: protein arginine methyltransferase 5 | Recommended Dilutions: WB 1:5000-1:50000 |
| Isotype: IgG1 | Calculated MW: 637 aa, 73 kDa | |
| Immunogen Catalog Number: AG9678 | Observed MW: 68 kDa | |

Applications

| | |
|---|---|
| Tested Applications: WB, ELISA | Positive Controls: WB : MCF-7 cells, HeLa cells, HEK-293 cells, HepG2 cells, Jurkat cells, HSC-T6 cells |
| Species Specificity: Human, rat | |

Background Information

PRMT5 is a Type II enzyme that catalyzes arginine monomethylation and symmetric dimethylation (Rme1 and Rme2s). The many targets of PRMT5 include ribosomal proteins, the histone chaperone nucleoplasm, p53, and histones. PRMT5 is frequently observed in a complex with the cofactor, methylome protein 50 (MEP50), which is required for PRMT5 activity. PRMT5 is upregulated in several human malignancies, including lymphomas, lung cancer, breast cancer and colorectal cancer.

Storage

Storage:
Store at -20°C. Stable for one year after shipment.
Storage Buffer:
PBS with 0.02% sodium azide and 50% glycerol pH 7.3.
Aliquoting is unnecessary for -20°C storage

*** 20ul sizes contain 0.1% BSA

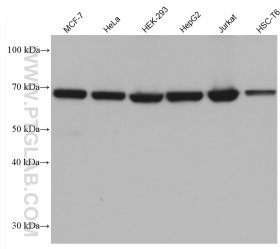
For technical support and original validation data for this product please contact:

T: 1 (888) 4PTGLAB (1-888-478-4522) (toll free
in USA), or 1(312) 455-8498 (outside USA)

E: proteintech@ptglab.com
W: ptglab.com

This product is exclusively available under Proteintech Group brand and is not available to purchase from any other manufacturer.

Selected Validation Data



Various lysates were subjected to SDS PAGE followed by western blot with 68534-1-Ig (PRMT5 antibody) at dilution of 1:10000 incubated at room temperature for 1.5 hours.