

For Research Use Only

Spermidine synthase Monoclonal antibody



Catalog Number: 68548-1-Ig

Basic Information

Catalog Number: 68548-1-Ig	GenBank Accession Number: BC000309	Purification Method: Protein A purification
Size: 150ul , Concentration: 1000 µg/ml by Nanodrop;	GeneID (NCBI): 6723	CloneNo.: 2F4E10
Source: Mouse	Full Name: spermidine synthase	Recommended Dilutions: WB 1:5000-1:50000 IF 1:200-1:800
Isotype: IgG2b	Calculated MW: 302 aa, 34 kDa	
Immunogen Catalog Number: AG33919	Observed MW: 34 kDa	

Applications

Tested Applications:
IF, WB, ELISA

Species Specificity:
Human

Positive Controls:

WB : HeLa cells, HEK-293 cells, HepG2 cells, Jurkat cells, K-562 cells

IF : RAW 264.7 cells,

Background Information

Spermidine synthase is an enzyme that catalyzes the transfer of the propylamine group from S-adenosylmethioninamine to putrescine in the biosynthesis of spermidine. The polyamines putrescine, spermine, and spermidine are ubiquitous polycationic mediators of cell growth and differentiation. Spermidine synthases catalyze the production of the linear triamine, spermidine, from putrescine. They utilize decarboxylated S-adenosylmethionine (dc-SAM), a universal cofactor of aminopropyltransferases, as a donor of the aminopropyl moiety (PMID:31134111).

Storage

Storage:
Store at -20°C. Stable for one year after shipment.

Storage Buffer:
PBS with 0.02% sodium azide and 50% glycerol pH 7.3.

Aliquoting is unnecessary for -20°C storage

*** 20ul sizes contain 0.1% BSA

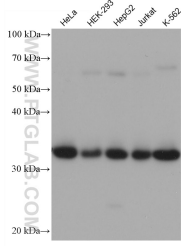
For technical support and original validation data for this product please contact:

T: 1 (888) 4PTGLAB (1-888-478-4522) (toll free in USA), or 1(312) 455-8498 (outside USA)

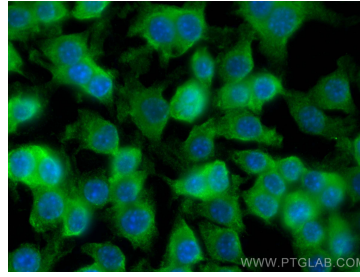
E: proteintech@ptglab.com
W: ptglab.com

This product is exclusively available under Proteintech Group brand and is not available to purchase from any other manufacturer.

Selected Validation Data



Various lysates were subjected to SDS PAGE followed by western blot with 68548-1-Ig (Spermidine synthase antibody) at dilution of 1:10000 incubated at room temperature for 1.5 hours.



Immunofluorescent analysis of (4% PFA) fixed RAW 264.7 cells using Spermidine synthase antibody (68548-1-Ig, Clone: 2F4E10) at dilution of 1:400 and CoraLite®488-Conjugated AffiniPure Goat Anti-Mouse IgG(H+L).