

For Research Use Only

SUCLA2 Monoclonal antibody

Catalog Number: 68549-1-Ig



Basic Information

Catalog Number: 68549-1-Ig	GenBank Accession Number: BC027587	Purification Method: Protein A purification
Size: 150ul , Concentration: 1000 ug/ml by Nanodrop;	GeneID (NCBI): 8803	CloneNo.: 2C7E4
Source: Mouse	UNIPROT ID: Q9P2R7	Recommended Dilutions: WB 1:2000-1:16000 IHC 1:500-1:2000 IF/ICC 1:500-1:2000
Isotype: IgG2b	Full Name: succinate-CoA ligase, ADP-forming, beta subunit	
Immunogen Catalog Number: AG17967	Calculated MW: 463 aa, 50 kDa	
	Observed MW: 48-50 kDa	

Applications

Tested Applications:
WB, IHC, IF/ICC, ELISA

Species Specificity:
human, mouse

Note-IHC: suggested antigen retrieval with TE buffer pH 9.0; (*) Alternatively, antigen retrieval may be performed with citrate buffer pH 6.0

Positive Controls:

WB : HepG2 cells, LNCaP cells, HeLa cells, Jurkat cells, K-562 cells, mouse brain tissue

IHC : human colon cancer tissue,

IF/ICC : Caco-2 cells, HepG2 cells

Background Information

SUCLA2, β subunit of succinate-CoA ligase, contributes to energy production in mitochondria through the succinate-CoA ligase enzyme. Succinate-CoA ligase catalyses the reversible conversion of succinyl-CoA and ADP or GDP to succinate and ATP or GTP. SUCLA2 mutations cause global protein succinylation and mitochondrial DNA depletion (PMID: 33230181, PMID: 20301762). Mutations in SUCLA2 are also associated with SUCLA2-related mitochondrial DNA depletion syndrome, Leigh syndrome, down syndrome (PMID: 23010432).

Storage

Storage:

Store at -20°C. Stable for one year after shipment.

Storage Buffer:

PBS with 0.02% sodium azide and 50% glycerol pH 7.3.

Aliquoting is unnecessary for -20°C storage

***** 20ul sizes contain 0.1% BSA**

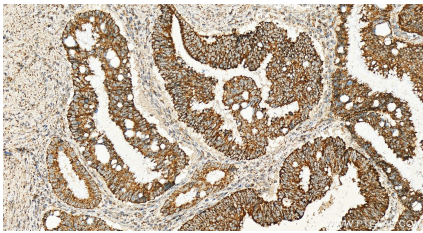
For technical support and original validation data for this product please contact:

T: 1 (888) 4PTGLAB (1-888-478-4522) (toll free in USA), or 1(312) 455-8498 (outside USA)

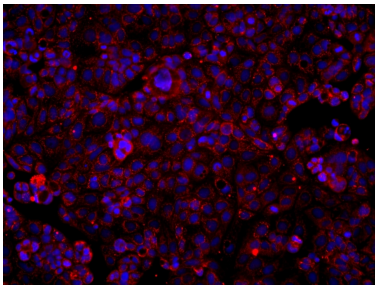
E: proteintech@ptglab.com
W: ptglab.com

This product is exclusively available under Proteintech Group brand and is not available to purchase from any other manufacturer.

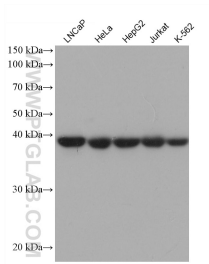
Selected Validation Data



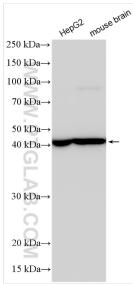
Immunohistochemical analysis of paraffin-embedded human colon cancer tissue slide using 68549-1-Ig (SUCLA2 antibody) at dilution of 1:1000 (under 20x lens). Heat mediated antigen retrieval with Tris-EDTA buffer (pH 9.0).



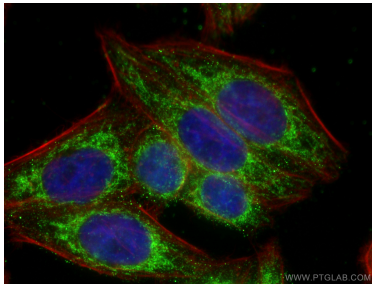
Immunofluorescent analysis of (4% PFA) fixed Caco-2 cells using SUCLA2 antibody (68549-1-Ig, Clone: 2C7E4) at dilution of 1:1000 and Multi-rAb CoraLite® Plus 594-Goat Anti-Mouse Recombinant Secondary Antibody (H+L) (Cat.NO. RGAM004).



Various lysates were subjected to SDS PAGE followed by western blot with 68549-1-Ig (SUCLA2 antibody) at dilution of 1:9900 incubated at room temperature for 1.5 hours.



Various lysates were subjected to SDS PAGE followed by western blot with 68549-1-Ig (SUCLA2 antibody) at dilution of 1:8000 incubated at room temperature for 1.5 hours.



Immunofluorescent analysis of (4% PFA) fixed HepG2 cells using SUCLA2 antibody (68549-1-Ig, Clone: 2C7E4) at dilution of 1:800 and Multi-rAb CoraLite® Plus 488-Goat Anti-Mouse Recombinant Secondary Antibody (H+L) (RGAM002), CL594-phalloidin (red).