

For Research Use Only

# RAB35 Monoclonal antibody

Catalog Number: 68552-1-Ig



## Basic Information

<b>Catalog Number:</b> 68552-1-Ig	<b>GenBank Accession Number:</b> BC015931	<b>Purification Method:</b> Protein A purification
<b>Size:</b> 150ul , Concentration: 1000 µg/ml by Nanodrop;	<b>GeneID (NCBI):</b> 11021	<b>CloneNo.:</b> 3H3E1
<b>Source:</b> Mouse	<b>Full Name:</b> RAB35, member RAS oncogene family	<b>Recommended Dilutions:</b> WB 1:1000-1:8000
<b>Isotype:</b> IgG2a	<b>Calculated MW:</b> 201 aa, 23 kDa	
<b>Immunogen Catalog Number:</b> AG21424	<b>Observed MW:</b> 23 kDa	

## Applications

<b>Tested Applications:</b> WB, ELISA	<b>Positive Controls:</b> WB : mouse brain tissue, rat brain tissue
<b>Species Specificity:</b> Human, mouse, rat, rabbit	

## Background Information

RAB35 is a member of the small GTPase superfamily. Like the other Rab proteins, RAB35 has 2 consecutive cysteine residues at its C terminus, and this region is thought to be involved in membrane association. Rab35 is found on the cell surface and endosomes, where it has been proposed to play a role in recycling of the transferrin and other receptors.

## Storage

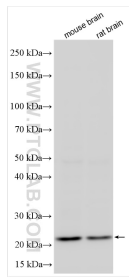
**Storage:**  
Store at -20°C. Stable for one year after shipment.  
**Storage Buffer:**  
PBS with 0.02% sodium azide and 50% glycerol pH 7.3.  
Aliquoting is unnecessary for -20°C storage

\*\*\* 20ul sizes contain 0.1% BSA

For technical support and original validation data for this product please contact:  
T: 1 (888) 4PTGLAB (1-888-478-4522) (toll free in USA), or 1(312) 455-8498 (outside USA)  
E: [proteintech@ptglab.com](mailto:proteintech@ptglab.com)  
W: [ptglab.com](http://ptglab.com)

This product is exclusively available under Proteintech Group brand and is not available to purchase from any other manufacturer.

## Selected Validation Data



Various lysates were subjected to SDS PAGE followed by western blot with 68552-1-Ig (RAB35 antibody) at dilution of 1:4000 incubated at room temperature for 1.5 hours.