

For Research Use Only

STARD10 Monoclonal antibody, PBS Only



Catalog Number: 68554-1-PBS

Basic Information

Catalog Number: 68554-1-PBS	GenBank Accession Number: BC007919	Purification Method: Protein G purification
Size: 100ug , Concentration: 1 mg/ml by Nanodrop;	GeneID (NCBI): 10809	CloneNo.: 1B9A1
Source: Mouse	UNIPROT ID: Q9Y365	
Isotype: IgG1	Full Name: StAR-related lipid transfer (START) domain containing 10	
Immunogen Catalog Number: AG10932	Calculated MW: 291 aa, 33 kDa	
	Observed MW: 35-40 kDa	

Applications

Tested Applications:
WB, IP, IF, Indirect ELISA

Species Specificity:
Human, mouse, rat, rabbit, pig

Background Information

STARD10 (START domain-containing protein 10, also known as PCTP-like protein) is highly expressed in liver and responsible to transfer phosphatidylcholine. STARD10 was identified as a protein overexpressed in breast cancer that cooperates with the ErbB family of receptor tyrosine kinases in cellular transformation (PMID: 15911624). This antibody detected duplicate bands between 35-40 kDa (PMID: 15150109).

Storage

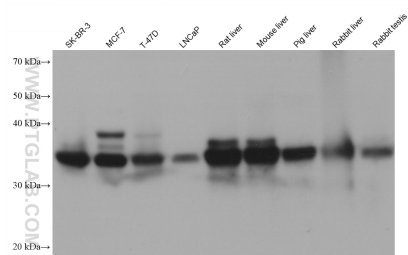
Storage:
Store at -80°C.

Storage Buffer:
PBS Only

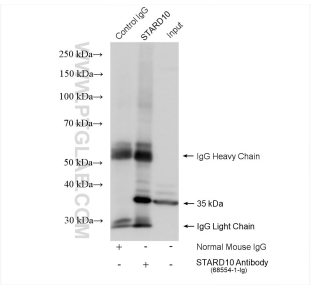
For technical support and original validation data for this product please contact:
T: 1 (888) 4PTGLAB (1-888-478-4522) (toll free in USA), or 1(312) 455-8498 (outside USA)
E: proteintech@ptglab.com
W: ptglab.com

This product is exclusively available under Proteintech Group brand and is not available to purchase from any other manufacturer.

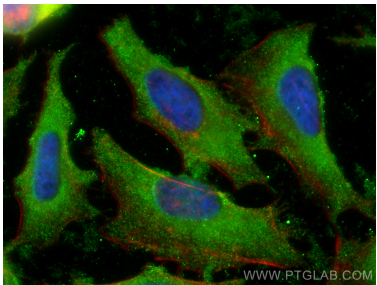
Selected Validation Data



Various lysates were subjected to SDS PAGE followed by western blot with 68554-1-Ig (STARD10 antibody) at dilution of 1:20000 incubated at room temperature for 1.5 hours. This data was developed using the same antibody clone with 68554-1-PBS in a different storage buffer formulation.



IP result of anti-STARD10 (IP:68554-1-Ig, 4ug; Detection:68554-1-Ig 1:6000) with HepG2 cells lysate 1480 ug. This data was developed using the same antibody clone with 68554-1-PBS in a different storage buffer formulation.



Immunofluorescent analysis of (-20°C Ethanol) fixed HeLa cells using STARD10 antibody (68554-1-Ig, Clone: 1B9A1) at dilution of 1:800 and CoraLite®488-Conjugated AffiniPure Goat Anti-Mouse IgG(H+L), CL594-Phalloidin (red). This data was developed using the same antibody clone with 68554-1-PBS in a different storage buffer formulation.