

For Research Use Only

# MRPL24 Monoclonal antibody

Catalog Number: 68556-1-Ig

Featured Product



## Basic Information

Catalog Number:

68556-1-Ig

Size:

150ul, Concentration: 1000 ug/ml by

Nanodrop;

Source:

Mouse

Isotype:

IgG1

Immunogen Catalog Number:

AG9576

GenBank Accession Number:

BC016700

GeneID (NCBI):

79590

UNIPROT ID:

Q96A35

Full Name:

mitochondrial ribosomal protein L24

Calculated MW:

216 aa, 25 kDa

Observed MW:

25-28 kDa

Purification Method:

Protein G purification

CloneNo.:

3D3C8

Recommended Dilutions:

WB 1:5000-1:50000

## Applications

Tested Applications:

WB, ELISA

Species Specificity:

human

Positive Controls:

WB : HepG2 cells, HeLa cells, A431 cells, HT-29 cells, LNCaP cells, HEK-293 cells, Jurkat cells, K-562 cells, Raji cells

## Storage

Storage:

Store at -20°C. Stable for one year after shipment.

Storage Buffer:

PBS with 0.02% sodium azide and 50% glycerol pH 7.3.

Aliquoting is unnecessary for -20°C storage

\*\*\* 20ul sizes contain 0.1% BSA

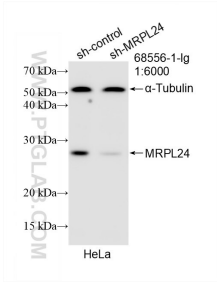
For technical support and original validation data for this product please contact:

T: 1 (888) 4PTGLAB (1-888-478-4522) (toll free in USA), or 1(312) 455-8498 (outside USA)

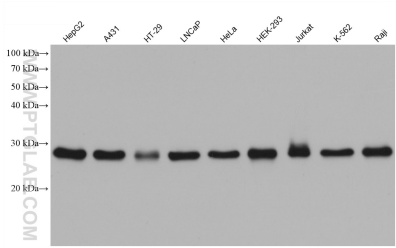
E: [proteintech@ptglab.com](mailto:proteintech@ptglab.com)  
W: [ptglab.com](http://ptglab.com)

This product is exclusively available under Proteintech Group brand and is not available to purchase from any other manufacturer.

Selected Validation Data



WB result of MRPL24 antibody (68556-1-Ig; 1:6000; incubated at room temperature for 1.5 hours) with sh-Control and sh-MRPL24 transfected HeLa cells.



Various lysates were subjected to SDS PAGE followed by western blot with 68556-1-Ig (MRPL24 antibody) at dilution of 1:10000 incubated at room temperature for 1.5 hours.