

For Research Use Only

Integrin alpha-5 Monoclonal antibody, PBS Only

Catalog Number: 68561-1-PBS



Basic Information

Catalog Number:

68561-1-PBS

Size:

100ug , Concentration: 1mg/ml by
Nanodrop;

Source:

Mouse

Isotype:

IgG2a

Immunogen Catalog Number:

AG33642

GenBank Accession Number:

BC008786

GeneID (NCBI):

3678

UNIPROT ID:

P08648

Full Name:

integrin, alpha 5 (fibronectin receptor,
alpha polypeptide)

Calculated MW:

115 kDa

Observed MW:

140 kDa

Purification Method:

Protein A purification

CloneNo.:

3B9E5

Applications

Tested Applications:

WB, Indirect ELISA

Species Specificity:

human, mouse, rat, pig, rabbit

Background Information

Integrins are cell adhesion receptors that are heterodimers composed of non-covalently associated alpha and beta subunits. Integrin alpha 5 (ITGA5), belongs to the integrin alpha chain family, primarily binds to Integrin beta 1 (ITGB1) to form an $\alpha 5 \beta 1$ heterodimer (PMID: 33711961). Integrin $\alpha 5 \beta 1$ is a specific receptor of fibronectin through its arginine-glycine-aspartic acid (RGD) binding site (PMID: 19608542). Integrin $\alpha 5 \beta 1$ plays roles in cell adhesion, migration and matrix formation, and has emerged as an essential mediator in many human carcinomas (PMID: 33408483).

Storage

Storage:

Store at -80°C.

Storage Buffer:

PBS Only

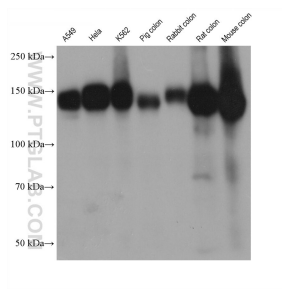
For technical support and original validation data for this product please contact:

T: 1 (888) 4PTGLAB (1-888-478-4522) (toll free
in USA), or 1(312) 455-8498 (outside USA)

E: proteintech@ptglab.com
W: ptglab.com

This product is exclusively available under Proteintech Group brand and is not available to purchase from any other manufacturer.

Selected Validation Data



Various lysates were subjected to SDS PAGE followed by western blot with 68561-1-Ig (Integrin alpha-5 antibody) at dilution of 1:10000 incubated at room temperature for 1.5 hours. This data was developed using the same antibody clone with 68561-1-PBS in a different storage buffer formulation.