

For Research Use Only

UBR2 Monoclonal antibody

Catalog Number: 68565-1-Ig



Basic Information

| | | |
|--|---|---|
| Catalog Number: 68565-1-Ig | GenBank Accession Number: BC064512 | Purification Method: Protein G purification |
| Size: 150ul , Concentration: 1000 ug/ml by Nanodrop; | GeneID (NCBI): 23304 | CloneNo.: 1D5H2 |
| Source: Mouse | UNIPROT ID: Q8IWW8 | Recommended Dilutions: WB 1:5000-1:50000 |
| Isotype: IgG1 | Full Name: ubiquitin protein ligase E3 component n-recognin 2 | |
| Immunogen Catalog Number: AG13446 | Calculated MW: 439aa,50 kDa; 1755aa,201 kDa | |
| | Observed MW: 201 kDa | |

Applications

| | |
|--|---|
| Tested Applications: WB, ELISA | Positive Controls: |
| Species Specificity: human, mouse, rat | WB : HEK-293 cells, HeLa cells, MCF-7 cells, Jurkat cells, K-562 cells, HSC-T6 cells, NIH/3T3 cells, 4T1 cells |

Background Information

UBR2(Ubiquitin-protein ligase E3-alpha-2) is also named as C6orf133, KIAA0349 and N-recognin-2. It is a component of the N-end rule pathway and recognizes and binds to proteins bearing specific N-terminal residues that are destabilizing according to the N-end rule, leading to their ubiquitination and subsequent degradation. It has four isoforms produced by alternative splicing.

Storage

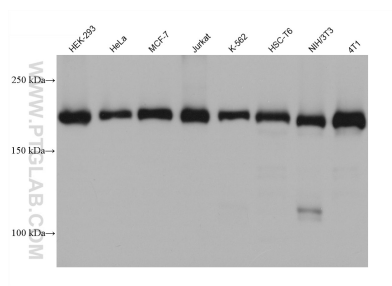
Storage:
Store at -20°C. Stable for one year after shipment.
Storage Buffer:
PBS with 0.02% sodium azide and 50% glycerol pH 7.3.
Aliquoting is unnecessary for -20°C storage

*** 20ul sizes contain 0.1% BSA

For technical support and original validation data for this product please contact:
T: 1 (888) 4PTGLAB (1-888-478-4522) (toll free in USA), or 1(312) 455-8498 (outside USA)
E: proteintech@ptglab.com
W: ptglab.com

This product is exclusively available under Proteintech Group brand and is not available to purchase from any other manufacturer.

Selected Validation Data



Various lysates were subjected to SDS PAGE followed by western blot with 68565-1-Ig (UBR2 antibody) at dilution of 1:10000 incubated at room temperature for 1.5 hours.