

For Research Use Only

# ALAS1 Monoclonal antibody, PBS Only



Catalog Number: 68567-1-PBS

## Basic Information

Catalog Number:

68567-1-PBS

Size:

100ug, Concentration: 1 mg/ml by Nanodrop;

Source:

Mouse

Isotype:

IgG1

Immunogen Catalog Number:

AG33580

GenBank Accession Number:

BC011798

GeneID (NCBI):

211

UNIPROT ID:

P13196

Full Name:

aminolevulinate, delta-, synthase 1

Calculated MW:

640 aa, 71 kDa

Observed MW:

68-70 kDa

Purification Method:

Protein G purification

CloneNo.:

1B1E4

## Applications

Tested Applications:

WB, Indirect ELISA

Species Specificity:

Human, rat, pig

## Storage

Storage:

Store at -80°C.

Storage Buffer:

PBS Only

For technical support and original validation data for this product please contact:

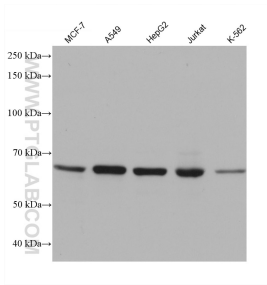
T: 1 (888) 4PTGLAB (1-888-478-4522) (toll free in USA), or 1(312) 455-8498 (outside USA)

E: [proteintech@ptglab.com](mailto:proteintech@ptglab.com)

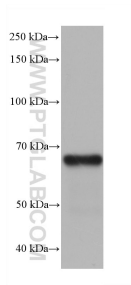
W: [ptglab.com](http://ptglab.com)

This product is exclusively available under Proteintech Group brand and is not available to purchase from any other manufacturer.

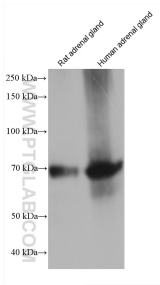
## Selected Validation Data



Various lysates were subjected to SDS PAGE followed by western blot with 68567-1-Ig (ALAS1 antibody) at dilution of 1:10000 incubated at room temperature for 1.5 hours. This data was developed using the same antibody clone with 68567-1-PBS in a different storage buffer formulation.



pig adrenal gland tissue were subjected to SDS PAGE followed by western blot with 68567-1-Ig (ALAS1 antibody) at dilution of 1:10000 incubated at room temperature for 1.5 hours. This data was developed using the same antibody clone with 68567-1-PBS in a different storage buffer formulation.



Various lysates were subjected to SDS PAGE followed by western blot with 68567-1-Ig (ALAS1 antibody) at dilution of 1:10000 incubated at room temperature for 1.5 hours. This data was developed using the same antibody clone with 68567-1-PBS in a different storage buffer formulation.