

For Research Use Only

LEO1 Monoclonal antibody

Catalog Number: 68568-1-Ig



Basic Information

Catalog Number: 68568-1-Ig	GenBank Accession Number: BC018147	Purification Method: Protein G purification
Size: 150ul , Concentration: 1000 µg/ml by Nanodrop;	GeneID (NCBI): 123169	CloneNo.: 3D7A2
Source: Mouse	Full Name: Leo1, Paf1/RNA polymerase II complex component, homolog (S. cerevisiae)	Recommended Dilutions: WB 1:5000-1:50000
Isotype: IgG1	Calculated MW: 666 aa, 75 kDa	
Immunogen Catalog Number: AG33577	Observed MW: 105 kDa	

Applications

Tested Applications: WB, ELISA	Positive Controls: WB : HepG2 cells, HT-29 cells, A549 cells, HEK-293 cells, LNCaP cells, MCF-7 cells, HeLa cells, Jurkat cells
Species Specificity: Human	

Background Information

LEO1, also named as RNA polymerase-associated protein LEO1, is a 666 amino acid protein, which belongs to the LEO1 family. LEO1 is a component of the PAF1 complex (PAF1C) which has multiple functions during transcription by RNA polymerase II and is implicated in regulation of development and maintenance of embryonic stem cell pluripotency. The calculated molecular weight of LEO1 is 75 kDa, but the modified LEO1 protein is about 105 kDa (PMID: 15632063).

Storage

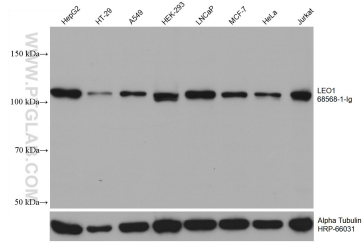
Storage:
Store at -20°C. Stable for one year after shipment.
Storage Buffer:
PBS with 0.02% sodium azide and 50% glycerol pH 7.3.
Aliquoting is unnecessary for -20°C storage

*** 20ul sizes contain 0.1% BSA

For technical support and original validation data for this product please contact:
T: 1 (888) 4PTGLAB (1-888-478-4522) (toll free in USA), or 1(312) 455-8498 (outside USA)
E: proteintech@ptglab.com
W: ptglab.com

This product is exclusively available under Proteintech Group brand and is not available to purchase from any other manufacturer.

Selected Validation Data



Various lysates were subjected to SDS PAGE followed by western blot with 68568-1-ig (LEO1 antibody) at dilution of 1:10000 incubated at room temperature for 1.5 hours. The membrane was stripped and reblotted with HRP-conjugated Alpha Tubulin Monoclonal antibody (HRP-66031) as loading control.