

For Research Use Only

# CYP46A1 Monoclonal antibody

Catalog Number: 68576-1-Ig



## Basic Information

<b>Catalog Number:</b> 68576-1-Ig	<b>GenBank Accession Number:</b> BC022539	<b>Purification Method:</b> Protein A purification
<b>Size:</b> 150ul , Concentration: 1000 ug/ml by Nanodrop;	<b>GeneID (NCBI):</b> 10858	<b>CloneNo.:</b> 1E10D3
<b>Source:</b> Mouse	<b>UNIPROT ID:</b> Q9Y6A2	<b>Recommended Dilutions:</b> WB 1:5000-1:20000 IHC 1:250-1:1000
<b>Isotype:</b> IgG2b	<b>Full Name:</b> cytochrome P450, family 46, subfamily A, polypeptide 1	
<b>Immunogen Catalog Number:</b> AG16786	<b>Calculated MW:</b> 500 aa, 57 kDa	
	<b>Observed MW:</b> 57 kDa	

## Applications

<b>Tested Applications:</b> WB, IHC, ELISA	<b>Positive Controls:</b>
<b>Species Specificity:</b> Human, Mouse, Rat, Rabbit, Pig	<b>WB :</b> human brain tissue, pig brain tissue, rabbit brain tissue, rat brain tissue, mouse brain tissue
<b>Note-IHC:</b> suggested antigen retrieval with <b>TE buffer pH 9.0; (*) Alternatively, antigen retrieval may be performed with citrate buffer pH 6.0</b>	<b>IHC :</b> mouse brain tissue,

## Background Information

Cytochrome P450 46A1 (CYP46A1), also named as CYP46, P450 46A1, CH24H and Cholesterol 24-hydroxylase, belongs to the cytochrome P450 family. CYP46A1 is a central nervous system-specific enzyme, and can freely cross the blood-brain barrier and be degraded in the liver. It is involved in the turnover of cholesterol. It converts cholesterol into 24S-hydroxycholesterol and, to a lesser extent, 25-hydroxycholesterol. CYP46A1 is significantly upregulated in hepatic lymphomyeloid cells compared with ESCs.(PMID:20039312)

## Storage

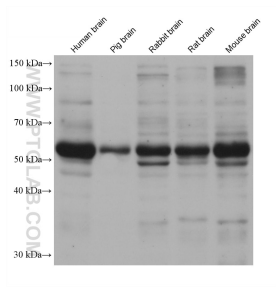
**Storage:**  
Store at -20°C. Stable for one year after shipment.  
**Storage Buffer:**  
PBS with 0.02% sodium azide and 50% glycerol pH 7.3.  
**Aliquoting is unnecessary for -20°C storage**

\*\*\* 20ul sizes contain 0.1% BSA

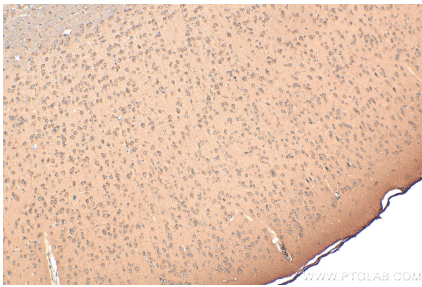
For technical support and original validation data for this product please contact:  
T: 1 (888) 4PTGLAB (1-888-478-4522) (toll free in USA), or 1(312) 455-8498 (outside USA)  
E: [proteintech@ptglab.com](mailto:proteintech@ptglab.com)  
W: [ptglab.com](http://ptglab.com)

This product is exclusively available under Proteintech Group brand and is not available to purchase from any other manufacturer.

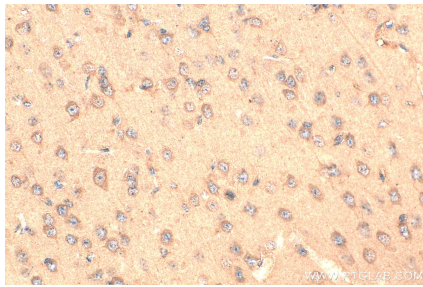
## Selected Validation Data



Various lysates were subjected to SDS PAGE followed by western blot with 68576-1-Ig (CYP46A1 antibody) at dilution of 1:10000 incubated at room temperature for 1.5 hours.



Immunohistochemical analysis of paraffin-embedded mouse brain tissue slide using 68576-1-Ig (CYP46A1 antibody) at dilution of 1:500 (under 10x lens). Heat mediated antigen retrieval with Tris-EDTA buffer (pH 9.0).



Immunohistochemical analysis of paraffin-embedded mouse brain tissue slide using 68576-1-Ig (CYP46A1 antibody) at dilution of 1:500 (under 40x lens). Heat mediated antigen retrieval with Tris-EDTA buffer (pH 9.0).