

For Research Use Only

THOP1 Monoclonal antibody, PBS Only

Catalog Number: 68587-1-PBS

Featured Product



Basic Information

Catalog Number:

68587-1-PBS

Size:

100ug, Concentration: 1 mg/ml by Nanodrop;

Source:

Mouse

Isotype:

IgG2a

Immunogen Catalog Number:

AG2268

GenBank Accession Number:

BC000135

GeneID (NCBI):

7064

UNIPROT ID:

P52888

Full Name:

thimet oligopeptidase 1

Calculated MW:

689 aa, 79 kDa

Observed MW:

79 kDa

Purification Method:

Protein A purification

CloneNo.:

1B11A11

Applications

Tested Applications:

WB, Indirect ELISA

Species Specificity:

human, mouse, rat

Background Information

Thimet oligopeptidase(THOP1) is a metallopeptidase implicated in the metabolism of many sleep-related peptides, including angiotensin I, gonadotropin releasing hormone (GnRH), neurotensin, and opioid peptides

Storage

Storage:

Store at -80°C.

Storage Buffer:

PBS Only

For technical support and original validation data for this product please contact:

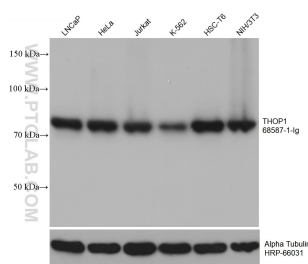
T: 1 (888) 4PTGLAB (1-888-478-4522) (toll free in USA), or 1(312) 455-8498 (outside USA)

E: proteintech@ptglab.com

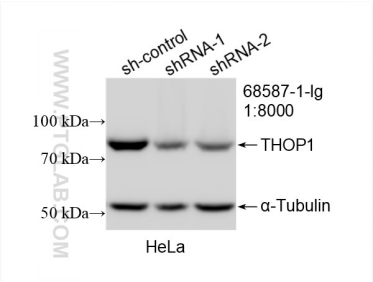
W: ptglab.com

This product is exclusively available under Proteintech Group brand and is not available to purchase from any other manufacturer.

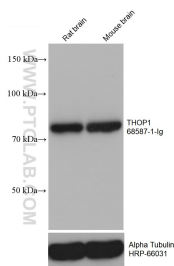
Selected Validation Data



Various lysates were subjected to SDS PAGE followed by western blot with 68587-1-Ig (THOP1 antibody) at dilution of 1:20000 incubated at room temperature for 1.5 hours. The membrane was stripped and reblotted with HRP-conjugated Alpha Tubulin Monoclonal antibody (HRP-66031) as loading control. This data was developed using the same antibody clone with 68587-1-PBS in a different storage buffer formulation.



WB result of THOP1 antibody (68587-1-Ig; 1:8000; incubated at room temperature for 1.5 hours) with sh-Control and sh-THOP1 transfected HeLa cells. This data was developed using the same antibody clone with 68587-1-PBS in a different storage buffer formulation.



Various lysates were subjected to SDS PAGE followed by western blot with 68587-1-Ig (THOP1 antibody) at dilution of 1:20000 incubated at room temperature for 1.5 hours. The membrane was stripped and reblotted with HRP-conjugated Alpha Tubulin Monoclonal antibody (HRP-66031) as loading control. This data was developed using the same antibody clone with 68587-1-PBS in a different storage buffer formulation.