

For Research Use Only

AEG-1/MTDH Monoclonal antibody

Catalog Number: 68592-1-Ig



Basic Information

Catalog Number: 68592-1-Ig	GenBank Accession Number: BC045642	Purification Method: Protein G purification
Size: 150ul , Concentration: 1000 µg/ml by Nanodrop;	GeneID (NCBI): 92140	CloneNo.: 1D8C2
Source: Mouse	Full Name: metadherin	Recommended Dilutions: WB 1:5000-1:50000
Isotype: IgG1	Calculated MW: 582 aa, 64 kDa	
Immunogen Catalog Number: AG5033	Observed MW: 70-80 kDa	

Applications

Tested Applications: WB, ELISA	Positive Controls: WB : A431 cells, MCF-10A cells, A549 cells, LNCaP cells, HeLa cells, Jurkat cells, MOLT-4 cells
Species Specificity: Human	

Background Information

MTDH, also known as AEG-1, is a single-pass transmembrane protein with its gene located at chromosome 8q22, the abnormalities of which have been identified in several tumor types. MTDH is overexpressed in a number of malignancies, such as breast cancer, malignant glioma, and neuroblastoma, and its overexpression is associated with poor clinical outcome. MTDH plays an important role in the regulation of carcinogenesis and tumor progression.

Storage

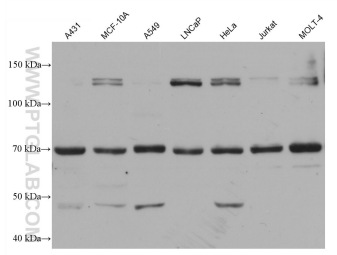
Storage:
Store at -20°C. Stable for one year after shipment.
Storage Buffer:
PBS with 0.02% sodium azide and 50% glycerol pH 7.3.
Aliquoting is unnecessary for -20°C storage

*** 20ul sizes contain 0.1% BSA

For technical support and original validation data for this product please contact:
T: 1 (888) 4PTGLAB (1-888-478-4522) (toll free in USA), or 1(312) 455-8498 (outside USA) E: proteintech@ptglab.com
W: ptglab.com

This product is exclusively available under Proteintech Group brand and is not available to purchase from any other manufacturer.

Selected Validation Data



Various lysates were subjected to SDS PAGE followed by western blot with 68592-1-Ig (AEG-1 antibody) at dilution of 1:10000 incubated at room temperature for 1.5 hours.