

For Research Use Only

HOMER1 Monoclonal antibody

Catalog Number: 68597-1-Ig



Basic Information

Catalog Number: 68597-1-Ig	GenBank Accession Number: BC015502	Purification Method: Protein G purification
Size: 150ul , Concentration: 1000 ug/ml by Nanodrop;	GeneID (NCBI): 9456	CloneNo.: 3B1B11
Source: Mouse	UNIPROT ID: Q86YM7	Recommended Dilutions: WB 1:5000-1:50000 IF/ICC 1:400-1:1600
Isotype: IgG1	Full Name: homer homolog 1 (Drosophila)	
Immunogen Catalog Number: AG21302	Calculated MW: 40 kDa	
	Observed MW: 40-46 kDa	

Applications

Tested Applications: WB, IF/ICC, ELISA	Positive Controls:
Species Specificity: human, mouse, rat, pig, rabbit, chicken	WB : pig brain tissue, LNCaP cells, Calu-3 cells, HEK-293 cells, rabbit brain tissue, rat brain tissue, mouse brain tissue, pig cerebellum tissue, rat cerebellum tissue, mouse cerebellum tissue, MCF-10A cells, MOLT-4 cells, rat brain tissue, chicken brain tissue
	IF/ICC : SH-SY5Y cells,

Background Information

Human HOMER1, also named as SYN47, belongs to the Homer family. Human HOMER1 has some isoforms: HOMER1a, HOMER1b, HOMER1c, HOMER1e and HOMER1h. Mouse Homer1 also named as Vesl-1 and it has some isoforms: Vesl-1L, Vesl-1m, Vesl-1s, Homer1b, and Homer1d. HOMER1 is a postsynaptic density scaffolding protein. It is a neuronal immediate-early gene (IEG) that is enriched at excitatory synapses and binds mGluRs. In WB, the MW of HOMER1 is about 46-50kd, 40-43kd and 20-26kd.

Storage

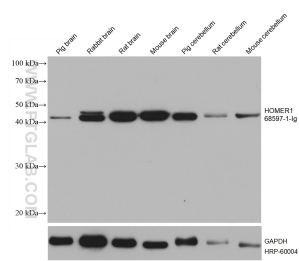
Storage:
Store at -20°C. Stable for one year after shipment.
Storage Buffer:
PBS with 0.02% sodium azide and 50% glycerol, pH7.3
Aliquoting is unnecessary for -20°C storage

*** 20ul sizes contain 0.1% BSA

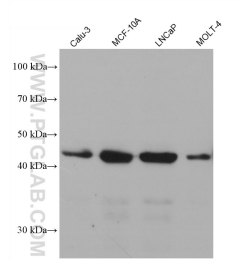
For technical support and original validation data for this product please contact:
T: 1 (888) 4PTGLAB (1-888-478-4522) (toll free in USA), or 1(312) 455-8498 (outside USA)
E: proteintech@ptglab.com
W: ptglab.com

This product is exclusively available under Proteintech Group brand and is not available to purchase from any other manufacturer.

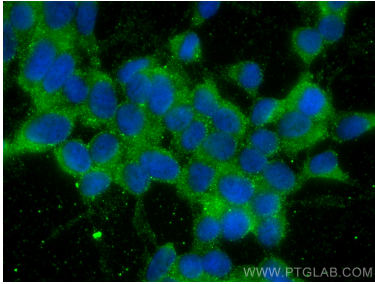
Selected Validation Data



Various lysates were subjected to SDS PAGE followed by western blot with 68597-1-Ig (HOMER1 antibody) at dilution of 1:20000 incubated at room temperature for 1.5 hours. The membrane was stripped and reblotted with HRP-conjugated GAPDH Monoclonal antibody (HRP-60004) as loading control.



Various lysates were subjected to SDS PAGE followed by western blot with 68597-1-Ig (HOMER1 antibody) at dilution of 1:20000 incubated at room temperature for 1.5 hours.



Immunofluorescent analysis of (-20°C Ethanol) fixed SH-SY5Y cells using HOMER1 antibody (68597-1-Ig, Clone: 3B1B11) at dilution of 1:800 and CoraLite®488-Conjugated AffiniPure Goat Anti-Mouse IgG(H+L).