

For Research Use Only

# HOMER1 Monoclonal antibody

Catalog Number: 68597-1-Ig



## Basic Information

<b>Catalog Number:</b> 68597-1-Ig	<b>GenBank Accession Number:</b> BC015502	<b>Purification Method:</b> Protein A purification
<b>Size:</b> 150ul , Concentration: 1000 ug/ml by Nanodrop;	<b>GeneID (NCBI):</b> 9456	<b>CloneNo.:</b> 3B1B11
<b>Source:</b> Mouse	<b>UNIPROT ID:</b> Q86YM7	<b>Recommended Dilutions:</b> WB 1:5000-1:50000 IF/ICC 1:400-1:1600
<b>Isotype:</b> IgG1	<b>Full Name:</b> homer homolog 1 (Drosophila)	
<b>Immunogen Catalog Number:</b> AG21302	<b>Calculated MW:</b> 40 kDa	
	<b>Observed MW:</b> 40-46 kDa	

## Applications

<b>Tested Applications:</b> WB, IF/ICC, ELISA	<b>Positive Controls:</b>
<b>Species Specificity:</b> Human, Mouse, Rat, Rabbit, Pig, Chicken	<b>WB :</b> pig brain tissue, LNCaP cells, Calu-3 cells, HEK-293 cells, rabbit brain tissue, rat brain tissue, mouse brain tissue, pig cerebellum tissue, rat cerebellum tissue, mouse cerebellum tissue, MCF-10A cells, MOLT-4 cells, rat brain tissue, chicken brain tissue
	<b>IF/ICC :</b> SH-SY5Y cells,

## Background Information

Human HOMER1, also named as SYN47, belongs to the Homer family. Human HOMER1 has some isoforms: HOMER1a, HOMER1b, HOMER1c, HOMER1e and HOMER1h. Mouse Homer1 also named as Vesl-1 and it has some isoforms: Vesl-1L, Vesl-1m, Vesl-1s, Homer1b, and Homer1d. HOMER1 is a postsynaptic density scaffolding protein. It is a neuronal immediate-early gene (IEG) that is enriched at excitatory synapses and binds mGluRs. In WB, the MW of HOMER1 is about 46-50kd, 40-43kd and 20-26kd.

## Storage

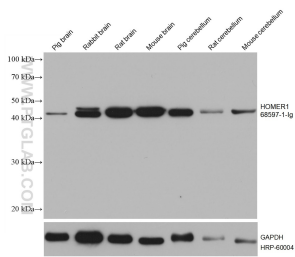
**Storage:**  
Store at -20°C. Stable for one year after shipment.  
**Storage Buffer:**  
PBS with 0.02% sodium azide and 50% glycerol pH 7.3.  
**Aliquoting is unnecessary for -20°C storage**

\*\*\* 20ul sizes contain 0.1% BSA

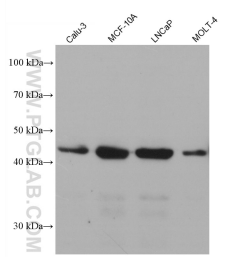
For technical support and original validation data for this product please contact:  
T: 1 (888) 4PTGLAB (1-888-478-4522) (toll free in USA), or 1(312) 455-8498 (outside USA)  
E: [proteintech@ptglab.com](mailto:proteintech@ptglab.com)  
W: [ptglab.com](http://ptglab.com)

This product is exclusively available under Proteintech Group brand and is not available to purchase from any other manufacturer.

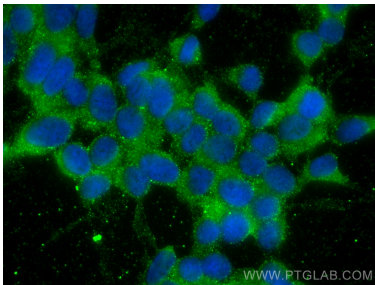
## Selected Validation Data



Various lysates were subjected to SDS PAGE followed by western blot with 68597-1-Ig (HOMER1 antibody) at dilution of 1:20000 incubated at room temperature for 1.5 hours. The membrane was stripped and reblotted with HRP-conjugated GAPDH Monoclonal antibody (HRP-60004) as loading control.



Various lysates were subjected to SDS PAGE followed by western blot with 68597-1-Ig (HOMER1 antibody) at dilution of 1:20000 incubated at room temperature for 1.5 hours.



Immunofluorescent analysis of (-20°C Ethanol) fixed SH-SY5Y cells using HOMER1 antibody (68597-1-Ig, Clone: 3B1B11) at dilution of 1:800 and CoraLite®488-Conjugated Goat Anti-Mouse IgG(H+L).