

For Research Use Only

# INPP5E Monoclonal antibody

Catalog Number: 68602-1-Ig



## Basic Information

Catalog Number:

68602-1-Ig

Size:

150ul, Concentration: 1000 ug/ml by Nanodrop and 588 ug/ml by Bradford method using BSA as the standard;

Source:

Mouse

Isotype:

IgG2a

Immunogen Catalog Number:

AG11959

GenBank Accession Number:

BC028032

GeneID (NCBI):

56623

UNIPROT ID:

Q9NRR6

Full Name:

inositol polyphosphate-5-phosphatase, 72 kDa

Calculated MW:

644 aa, 70 kDa

Observed MW:

72 kDa

Purification Method:

Protein A purification

CloneNo.:

2B3D6

Recommended Dilutions:

WB 1:1000-1:6000

## Applications

Tested Applications:

WB, ELISA

Species Specificity:

Human

Positive Controls:

WB : SH-SY5Y cells, HaCaT cells, HEK-293 cells, U-251 cells, HeLa cells

## Background Information

INPP5E (72 kDa inositol polyphosphate 5-phosphatase) converts phosphatidylinositol 3,4,5-trisphosphate (PtdIns 3,4,5-P3) to PtdIns-P2. In mouse, highest protein expression was in brain, heart, and testis, with lower expression in thymus and lung, and very little expression in kidney, spleen, and liver (PMID:10764818). Defects in INPP5E are the cause of Joubert syndrome type 1 (JBTS1) and mental retardation-truncal obesity-retinal dystrophy-micropenis (MORMS) (PMID:19668215).

## Storage

Storage:

Store at -20°C. Stable for one year after shipment.

Storage Buffer:

PBS with 0.02% sodium azide and 50% glycerol pH 7.3.

Aliquoting is unnecessary for -20°C storage

\*\*\* 20ul sizes contain 0.1% BSA

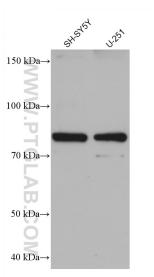
For technical support and original validation data for this product please contact:

T: 1 (888) 4PTGLAB (1-888-478-4522) (toll free in USA), or 1(312) 455-8498 (outside USA)

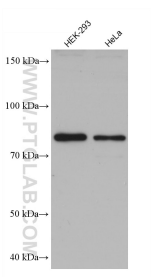
E: [proteintech@ptglab.com](mailto:proteintech@ptglab.com)  
W: [ptglab.com](http://ptglab.com)

This product is exclusively available under Proteintech Group brand and is not available to purchase from any other manufacturer.

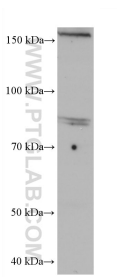
Selected Validation Data



Various lysates were subjected to SDS PAGE followed by western blot with 68602-1-Ig (INPP5E antibody) at dilution of 1:3000 incubated at room temperature for 1.5 hours.



Various lysates were subjected to SDS PAGE followed by western blot with 68602-1-Ig (INPP5E antibody) at dilution of 1:3000 incubated at room temperature for 1.5 hours.



HaCaT cells were subjected to SDS PAGE followed by western blot with 68602-1-Ig (INPP5E antibody) at dilution of 1:3000 incubated at room temperature for 1.5 hours.