

For Research Use Only

RAB38 Monoclonal antibody

Catalog Number: 68603-1-Ig



Basic Information

Catalog Number:	68603-1-Ig	GenBank Accession Number:	BC015808	Purification Method:	Protein A purification
Size:	150ul , Concentration: 1000 ug/ml by Nanodrop;	GeneID (NCBI):	23682	CloneNo.:	3A10C5
Source:	Mouse	UNIPROT ID:	P57729	Recommended Dilutions:	WB 1:2000-1:10000
Isotype:	IgG2a	Full Name:	RAB38, member RAS oncogene family		
Immunogen Catalog Number:	AG26440	Calculated MW:	211 aa, 24 kDa		
		Observed MW:	24 kDa		

Applications

Tested Applications:	WB, ELISA	Positive Controls:	WB : MCF-10A cells, Mo7e cells, HaCaT cells
Species Specificity:	Human		

Background Information

The RAB family of small GTPases is part of the Ras protein superfamily and is primarily responsible for regulating intracellular vesicle transport and migration. RAB38 is a recently identified member of the RAB family of proteins and its expression is tissue-specific. RAB38 is predominantly expressed in melanocytes and melanoma tissues, but not in other normal tissues, serving as a melanocyte differentiation antigen. RAB38 has also been reported to be upregulated in glioblastoma, and high levels of its expression are associated with a poor prognosis and enhanced cell migration.

Storage

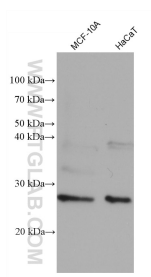
Storage:
Store at -20°C. Stable for one year after shipment.
Storage Buffer:
PBS with 0.02% sodium azide and 50% glycerol pH 7.3.
Aliquoting is unnecessary for -20°C storage

*** 20ul sizes contain 0.1% BSA

For technical support and original validation data for this product please contact:
T: 1 (888) 4PTGLAB (1-888-478-4522) (toll free in USA), or 1(312) 455-8498 (outside USA)
E: proteintech@ptglab.com
W: ptglab.com

This product is exclusively available under Proteintech Group brand and is not available to purchase from any other manufacturer.

Selected Validation Data



Various lysates were subjected to SDS PAGE followed by western blot with 68603-1-Ig (RAB38 antibody) at dilution of 1:5000 incubated at room temperature for 1.5 hours.