

For Research Use Only

# KANK1 Monoclonal antibody

Catalog Number: 68613-1-Ig



## Basic Information

<b>Catalog Number:</b> 68613-1-Ig	<b>GenBank Accession Number:</b> NM_015158	<b>Purification Method:</b> Protein G purification
<b>Size:</b> 150ul , Concentration: 1000 ug/ml by Nanodrop;	<b>GeneID (NCBI):</b> 23189	<b>CloneNo.:</b> 2D3G8
<b>Source:</b> Mouse	<b>UNIPROT ID:</b> Q14678	<b>Recommended Dilutions:</b> WB 1:5000-1:50000 IF/ICC 1:200-1:800
<b>Isotype:</b> IgG1	<b>Full Name:</b> KN motif and ankyrin repeat domains 1	
<b>Immunogen Catalog Number:</b> AG31440	<b>Calculated MW:</b> 147KD	
	<b>Observed MW:</b> 130-200 kDa	

## Applications

<b>Tested Applications:</b> WB, IF/ICC, FC (Intra), ELISA	<b>Positive Controls:</b>
<b>Species Specificity:</b> human	<b>WB :</b> A375 cells, PC-3 cells, MCF-7 cells, HeLa cells, HEK-293 cells, HepG2 cells, HuH-7 cells, Daudi cells, Raji cells
	<b>IF/ICC :</b> HepG2 cells,

## Background Information

KANK1 (KN motif and ankyrin repeat domain-containing protein 1) is involved in the control of cytoskeleton formation by regulating actin polymerization, inhibiting actin fiber formation and cell migration (PMID: 25961457). It inhibits RhoA activity, the formation of lamellipodia but not of filopodia (PMID: 25961457, PMID: 5961457). It also inhibits fibronectin-mediated cell spreading and regulates Rac signaling pathways (PMID: 25961457). Talin-KANK1 interaction controls the recruitment of cortical microtubule stabilizing complexes to focal adhesions (PMID: 27410476). KANK1 can be detected 130-200 kDa (PMID: 15823577, PMID: 33253712, PMID: 35805114).

## Storage

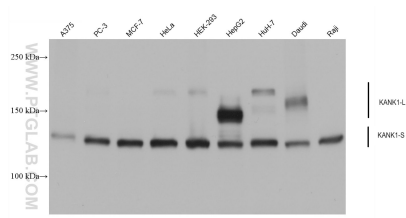
**Storage:**  
Store at -20°C. Stable for one year after shipment.  
**Storage Buffer:**  
PBS with 0.02% sodium azide and 50% glycerol pH 7.3.  
**Aliquoting is unnecessary for -20°C storage**

\*\*\* 20ul sizes contain 0.1% BSA

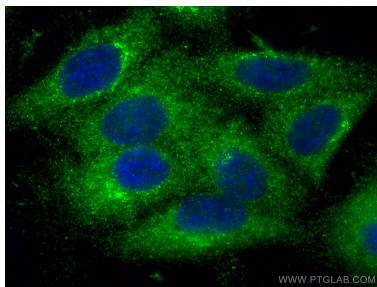
For technical support and original validation data for this product please contact:  
T: 1 (888) 4PTGLAB (1-888-478-4522) (toll free in USA), or 1(312) 455-8498 (outside USA)  
E: proteintech@ptglab.com  
W: ptglab.com

This product is exclusively available under Proteintech Group brand and is not available to purchase from any other manufacturer.

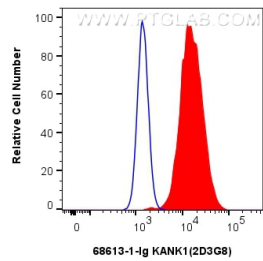
Selected Validation Data



Various lysates were subjected to SDS PAGE followed by western blot with 68613-1-Ig (KANK1 antibody) at dilution of 1:10000 incubated at room temperature for 1.5 hours.



Immunofluorescent analysis of (-20°C Ethanol) fixed HepG2 cells using KANK1 antibody (68613-1-Ig, Clone: 2D3G8 ) at dilution of 1:400 and CoraLite®488-Conjugated AffiniPure Goat Anti-Mouse IgG(H+L) (SA00013-1).



1x10<sup>6</sup> HepG2 cells were intracellularly stained with 0.25 ug KANK1 Monoclonal antibody (68613-1-Ig, Clone:2D3G8) and CoraLite®488-Conjugated Goat Anti-Mouse IgG(H+L) (SA00013-1)(red), or 0.25 ug Mouse IgG1 isotype control Mouse McAb (66360-1-Ig, Clone: 1F8D3) (blue). Cells were fixed with 4% PFA and permeabilized with Flow Cytometry Perm Buffer (PF00011-C).