

For Research Use Only

SPIN1 Monoclonal antibody

Catalog Number: 68615-1-Ig



Basic Information

Catalog Number:

68615-1-Ig

Size:

150ul, Concentration: 1000 ug/ml by Nanodrop;

Source:

Mouse

Isotype:

IgG1

Immunogen Catalog Number:

AG33686

GenBank Accession Number:

BC013571

GeneID (NCBI):

10927

UNIPROT ID:

Q9Y657

Full Name:

spindlin 1

Calculated MW:

262 aa, 30 kDa

Observed MW:

30 kDa

Purification Method:

Protein G purification

CloneNo.:

1G8C5

Recommended Dilutions:

WB 1:5000-1:50000

Applications

Tested Applications:

WB, ELISA

Species Specificity:

Human, mouse, rat, rabbit

Positive Controls:

WB : LNCaP cells, NCCIT cells, rabbit brain tissue, SK-BR-3 cells, HeLa cells, Jurkat cells, K-562 cells, rat brain tissue, mouse brain tissue

Background Information

SPIN1 (Spindlin 1) is a histone methylation reader, which recognizes trimethylated histone H3 lysine 4 through the protein-protein interaction. SPIN1 was initially found in ovarian cancer via searching ovarian cancer-related genes. It is overexpressed in ovarian cancer tissue, which exhibits a high homology to mouse Spin (Spindlin) gene. Signaling pathways responsible for SPIN1 functions include PI3K/Akt, Wnt and RET that are highly relevant to tumorigenesis. (PMID: 34492335, PMID: 31790762)

Storage

Storage:

Store at -20°C. Stable for one year after shipment.

Storage Buffer:

PBS with 0.02% sodium azide and 50% glycerol pH 7.3.

Aliquoting is unnecessary for -20°C storage

*** 20ul sizes contain 0.1% BSA

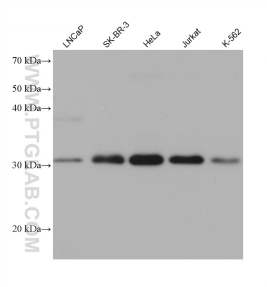
For technical support and original validation data for this product please contact:

T: 1 (888) 4PTGLAB (1-888-478-4522) (toll free in USA), or 1(312) 455-8498 (outside USA)

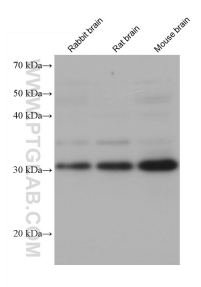
E: proteintech@ptglab.com
W: ptglab.com

This product is exclusively available under Proteintech Group brand and is not available to purchase from any other manufacturer.

Selected Validation Data



Various lysates were subjected to SDS PAGE followed by western blot with 68615-1-Ig (SPIN1 antibody) at dilution of 1:20000 incubated at room temperature for 1.5 hours.



Various lysates were subjected to SDS PAGE followed by western blot with 68615-1-Ig (SPIN1 antibody) at dilution of 1:20000 incubated at room temperature for 1.5 hours.