

For Research Use Only

# PRKCB Monoclonal antibody

Catalog Number: 68620-1-Ig **1 Publications**



## Basic Information

<b>Catalog Number:</b> 68620-1-Ig	<b>GenBank Accession Number:</b> BC036472	<b>Purification Method:</b> Protein G purification
<b>Size:</b> 150ul , Concentration: 500 µg/ml by Nanodrop;	<b>GeneID (NCBI):</b> 5579	<b>CloneNo.:</b> 4B7A1
<b>Source:</b> Mouse	<b>Full Name:</b> protein kinase C, beta	<b>Recommended Dilutions:</b> WB 1:2000-1:10000
<b>Isotype:</b> IgG1	<b>Calculated MW:</b> 673 aa, 77 kDa	
<b>Immunogen Catalog Number:</b> AG33693	<b>Observed MW:</b> 77 kDa	

## Applications

<b>Tested Applications:</b> WB, ELISA	<b>Positive Controls:</b> WB : human brain tissue, pig brain tissue, rabbit brain tissue, rat brain tissue, mouse brain tissue
<b>Cited Applications:</b> WB	
<b>Species Specificity:</b> Human, pig, rabbit, rat, mouse	

## Background Information

Protein kinase C (PKC) is a family of serine- and threonine-specific protein kinases that can be activated by calcium and second messenger diacylglycerol. Protein kinase Cs (PKCs) are signaling molecules that play key roles in many cellular processes, including secretion, gene expression, proliferation, and muscle contraction. The PKC family is broadly divided into three subgroups: classical, novel, and atypical PKCs. These subgroups differ in both protein sequences and mechanistic requirements for catalytic activity. PKC beta is one of the PKC family members. PKC beta has been reported to be involved in many different cellular functions, such as B cell activation, apoptosis induction, endothelial cell proliferation, and intestinal sugar absorption. Studies in mice also suggest that this kinase may also regulate neuronal functions and correlate fear-induced conflict behavior after stress. This antibody can recognize PKC beta, PKC alpha, PKC gamma, PKC epsilon and PKC delta.

## Notable Publications

Author	Pubmed ID	Journal	Application
Xiaoling Li	38061206	Redox Biol	WB

## Storage

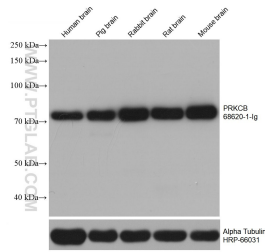
**Storage:**  
Store at -20°C. Stable for one year after shipment.  
**Storage Buffer:**  
PBS with 0.02% sodium azide and 50% glycerol pH 7.3.  
Aliquoting is unnecessary for -20°C storage

\*\*\* 20ul sizes contain 0.1% BSA

For technical support and original validation data for this product please contact:  
T: 1 (888) 4PTGLAB (1-888-478-4522) (toll free in USA), or 1(312) 455-8498 (outside USA)  
E: proteintech@ptglab.com  
W: ptglab.com

This product is exclusively available under Proteintech Group brand and is not available to purchase from any other manufacturer.

## Selected Validation Data



Various lysates were subjected to SDS PAGE followed by western blot with 68620-1-Ig (PRKCB antibody) at dilution of 1:5000 incubated at room temperature for 1.5 hours. The membrane was stripped and reblotted with HRP-conjugated Alpha Tubulin Monoclonal antibody (HRP-66031) as loading control.