

For Research Use Only

UCK2 Monoclonal antibody

Catalog Number: 68622-1-Ig



Basic Information

Catalog Number: 68622-1-Ig	GenBank Accession Number: BC002906	Purification Method: Protein A purification
Size: 150ul , Concentration: 1000 µg/ml by Nanodrop;	GeneID (NCBI): 7371	CloneNo.: 2F10F4
Source: Mouse	Full Name: uridine-cytidine kinase 2	Recommended Dilutions: WB 1:5000-1:50000
Isotype: IgG2b	Calculated MW: 29 kDa	
Immunogen Catalog Number: AG0782	Observed MW: ~30 kDa	

Applications

Tested Applications:
WB, ELISA

Species Specificity:
Human, mouse, rat

Positive Controls:

WB: A549 cells, LNCaP cells, MCF-7 cells, HeLa cells, HepG2 cells, K-562 cells, HSC-T6 cells, 4T1 cells

Background Information

Uridine-cytidine kinase 2 catalyzes the phosphorylation of uridine and cytidine to uridine monophosphate (UMP) and cytidine monophosphate (CMP), respectively. This is the first step in the production of the pyrimidine nucleoside triphosphates required for RNA and DNA synthesis. UCK2 belongs to the uridine kinase family and UCK have important roles for the phosphorylation of nucleoside analogs that may be important in chemotherapy of cancer.

Storage

Storage:
Store at -20°C. Stable for one year after shipment.

Storage Buffer:
PBS with 0.02% sodium azide and 50% glycerol pH 7.3.

Aliquoting is unnecessary for -20°C storage

*** 20ul sizes contain 0.1% BSA

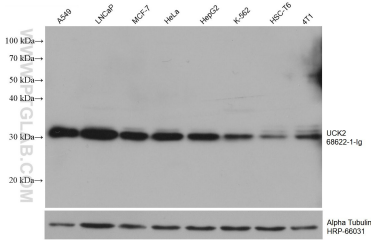
For technical support and original validation data for this product please contact:

T: 1 (888) 4PTGLAB (1-888-478-4522) (toll free
in USA), or 1(312) 455-8498 (outside USA)

E: proteintech@ptglab.com
W: ptglab.com

This product is exclusively available under Proteintech Group brand and is not available to purchase from any other manufacturer.

Selected Validation Data



Various lysates were subjected to SDS PAGE followed by western blot with 68622-1-Ig (UCK2 antibody) at dilution of 1:20000 incubated at room temperature for 1.5 hours. The membrane was stripped and reblotted with HRP-conjugated Alpha Tubulin Monoclonal antibody (HRP-66031) as loading control.