

For Research Use Only

MRPL10 Monoclonal antibody

Catalog Number: 68623-1-Ig



Basic Information

Catalog Number:

68623-1-Ig

Size:

150ul , Concentration: 1000 ug/ml by Nanodrop;

Source:

Mouse

Isotype:

IgG2a

Immunogen Catalog Number:

AG10060

GenBank Accession Number:

BC052601

GeneID (NCBI):

124995

UNIPROT ID:

Q7Z7H8

Full Name:

mitochondrial ribosomal protein L10

Calculated MW:

261 aa, 29 kDa

Observed MW:

29 kDa

Purification Method:

Protein A purification

CloneNo.:

2A1C4

Recommended Dilutions:

WB 1:5000-1:50000

IF/ICC 1:400-1:1600

Applications

Tested Applications:

WB, IF/ICC, ELISA

Species Specificity:

Human

Positive Controls:

WB : A549 cells, HeLa cells, U2OS cells, LNCaP cells, Jurkat cells, K-562 cells

IF/ICC : HeLa cells,

Storage

Storage:

Store at -20°C. Stable for one year after shipment.

Storage Buffer:

PBS with 0.02% sodium azide and 50% glycerol pH 7.3.

Aliquoting is unnecessary for -20°C storage

*** 20ul sizes contain 0.1% BSA

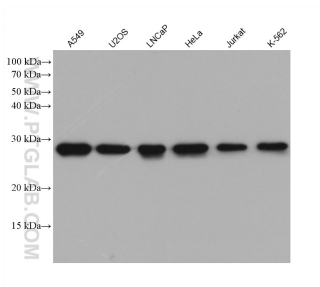
For technical support and original validation data for this product please contact:

T: 1 (888) 4PTGLAB (1-888-478-4522) (toll free in USA), or 1(312) 455-8498 (outside USA)

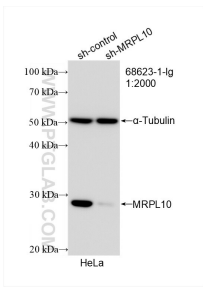
E: proteintech@ptglab.com
W: ptglab.com

This product is exclusively available under Proteintech Group brand and is not available to purchase from any other manufacturer.

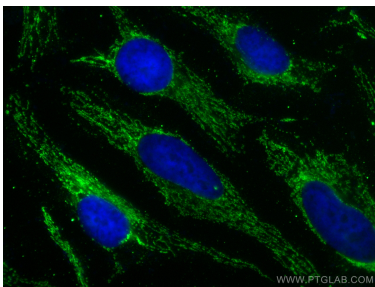
Selected Validation Data



Various lysates were subjected to SDS PAGE followed by western blot with 68623-1-Ig (MRPL10 antibody) at dilution of 1:10000 incubated at room temperature for 1.5 hours.



WB result of MRPL10 antibody (68623-1-Ig; 1:2000; incubated at room temperature for 1.5 hours) with sh-Control and sh-MRPL10 transfected HeLa cells.



Immunofluorescent analysis of (-20°C Methanol) fixed HeLa cells using MRPL10 antibody (68623-1-Ig, Clone: 2A1C4) at dilution of 1:800 and CoraLite®488-Conjugated AffiniPure Goat Anti-Mouse IgG(H+L).