

For Research Use Only

MRPL10 Monoclonal antibody, PBS Only

Catalog Number: 68623-1-PBS

Featured Product



Basic Information

Catalog Number:

68623-1-PBS

Size:

100ug , Concentration: 1mg/ml by Nanodrop;

Source:

Mouse

Isotype:

IgG2a

Immunogen Catalog Number:

AG10060

GenBank Accession Number:

BC052601

GeneID (NCBI):

124995

UNIPROT ID:

Q7Z7H8

Full Name:

mitochondrial ribosomal protein L10

Calculated MW:

261 aa, 29 kDa

Observed MW:

29 kDa

Purification Method:

Protein A purification

CloneNo.:

2A1C4

Applications

Tested Applications:

WB, IF/ICC, Indirect ELISA

Species Specificity:

human

Storage

Storage:

Store at -80°C.

Storage Buffer:

PBS Only

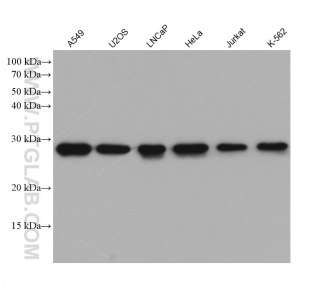
For technical support and original validation data for this product please contact:

T: 1 (888) 4PTGLAB (1-888-478-4522) (toll free in USA), or 1(312) 455-8498 (outside USA)

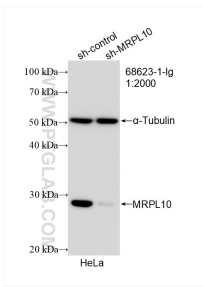
E: proteintech@ptglab.com
W: ptglab.com

This product is exclusively available under Proteintech Group brand and is not available to purchase from any other manufacturer.

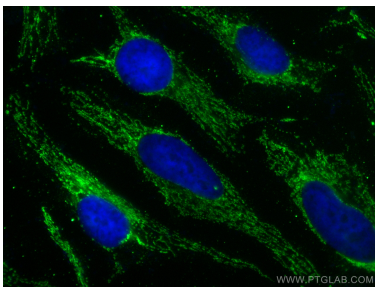
Selected Validation Data



Various lysates were subjected to SDS PAGE followed by western blot with 68623-1-Ig (MRPL10 antibody) at dilution of 1:10000 incubated at room temperature for 1.5 hours. This data was developed using the same antibody clone with 68623-1-PBS in a different storage buffer formulation.



WB result of MRPL10 antibody (68623-1-Ig; 1:2000; incubated at room temperature for 1.5 hours) with sh-Control and sh-MRPL10 transfected HeLa cells. This data was developed using the same antibody clone with 68623-1-PBS in a different storage buffer formulation.



Immunofluorescent analysis of (-20°C Methanol) fixed HeLa cells using MRPL10 antibody (68623-1-Ig, Clone: 2A1C4) at dilution of 1:800 and CoraLite®488-Conjugated AffiniPure Goat Anti-Mouse IgG(H+L). This data was developed using the same antibody clone with 68623-1-PBS in a different storage buffer formulation.