

For Research Use Only

C22orf25 Monoclonal antibody

Catalog Number: 68625-1-Ig



Basic Information

Catalog Number: 68625-1-Ig	GenBank Accession Number: BC041339	Purification Method: Protein G purification
Size: 150ul , Concentration: 1000 µg/ml by Nanodrop;	GeneID (NCBI): 128989	CloneNo.: 2G5B8
Source: Mouse	Full Name: chromosome 22 open reading frame 25	Recommended Dilutions: WB 1:2000-1:10000
Isotype: IgG1	Observed MW: 30-34 kDa	
Immunogen Catalog Number: AG27127		

Applications

Tested Applications:
WB, ELISA

Species Specificity:
Human

Positive Controls:

WB : DU 145 cells, human peripheral blood platelets, LNCaP cells, SK-BR-3 cells, HT-29 cells, HT-1376 cells, THP-1 cells, human heart tissue

Background Information

Storage

Storage:
Store at -20°C. Stable for one year after shipment.

Storage Buffer:
PBS with 0.02% sodium azide and 50% glycerol pH 7.3.

Aliquoting is unnecessary for -20°C storage

*** 20ul sizes contain 0.1% BSA

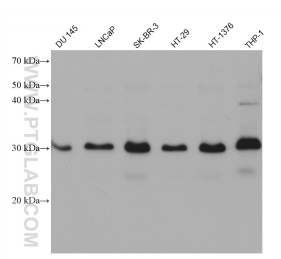
For technical support and original validation data for this product please contact:

T: 1 (888) 4PTGLAB (1-888-478-4522) (toll free
in USA), or 1(312) 455-8498 (outside USA)

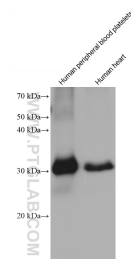
E: proteintech@ptglab.com
W: ptglab.com

This product is exclusively available under Proteintech Group brand and is not available to purchase from any other manufacturer.

Selected Validation Data



Various lysates were subjected to SDS PAGE followed by western blot with 68625-1-Ig (C22orf25 antibody) at dilution of 1:5000 incubated at room temperature for 1.5 hours.



Various lysates were subjected to SDS PAGE followed by western blot with 68625-1-Ig (C22orf25 antibody) at dilution of 1:5000 incubated at room temperature for 1.5 hours.