

For Research Use Only

PPM1F Monoclonal antibody

Catalog Number: 68626-1-Ig



Basic Information

Catalog Number: 68626-1-Ig	GenBank Accession Number: BC071989	Purification Method: Protein A purification
Size: 150ul , Concentration: 1000 ug/ml by Nanodrop;	GeneID (NCBI): 9647	CloneNo.: 2A2E8
Source: Mouse	UNIPROT ID: P49593	Recommended Dilutions: WB 1:5000-1:50000
Isotype: IgG2a	Full Name: protein phosphatase 1F (PP2C domain containing)	
Immunogen Catalog Number: AG10316	Calculated MW: 453 aa, 50 kDa	
	Observed MW: 50 kDa	

Applications

Tested Applications: WB, ELISA	Positive Controls: WB : U2OS cells, A375 cells, HEK-293 cells, HepG2 cells, Jurkat cells, K-562 cells, human peripheral blood platelets
Species Specificity: Human	

Background Information

Mg²⁺/Mn²⁺-dependent protein phosphatase 1F (PPM1F) belongs to the PP2C family of Ser/Thr protein phosphatases and is the critical enzyme responsible for dephosphorylating the threonine motif. PPM1F is ubiquitous in various tissues and organs (PMID: 26498692). High expression of PPM1F was positively associated with poor survival and tumor recurrence in patients with cancers and PPM1F might be a potential biomarker in HCC patients (PMID: 30470261).

Storage

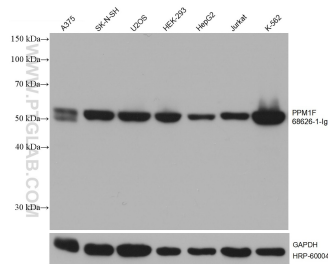
Storage:
Store at -20°C. Stable for one year after shipment.
Storage Buffer:
PBS with 0.02% sodium azide and 50% glycerol pH 7.3.
Aliquoting is unnecessary for -20°C storage

*** 20ul sizes contain 0.1% BSA

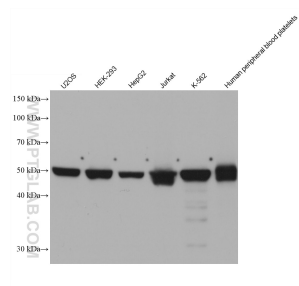
For technical support and original validation data for this product please contact:
T: 1 (888) 4PTGLAB (1-888-478-4522) (toll free in USA), or 1(312) 455-8498 (outside USA)
E: proteintech@ptglab.com
W: ptglab.com

This product is exclusively available under Proteintech Group brand and is not available to purchase from any other manufacturer.

Selected Validation Data



Various lysates were subjected to SDS PAGE followed by western blot with 68626-1-Ig (PPM1F antibody) at dilution of 1:20000 incubated at room temperature for 1.5 hours. The membrane was stripped and reblotted with HRP-conjugated GAPDH Monoclonal antibody (HRP-60004) as loading control.



Various lysates were subjected to SDS PAGE followed by western blot with 68626-1-Ig (PPM1F antibody) at dilution of 1:10000 incubated at room temperature for 1.5 hours.