

For Research Use Only

# PPM1F Monoclonal antibody, PBS Only



Catalog Number: 68626-1-PBS

## Basic Information

<b>Catalog Number:</b> 68626-1-PBS	<b>GenBank Accession Number:</b> BC071989	<b>Purification Method:</b> Protein A purification
<b>Size:</b> 100ug , Concentration: 1 mg/ml by Nanodrop;	<b>GeneID (NCBI):</b> 9647	<b>CloneNo.:</b> 2A2E8
<b>Source:</b> Mouse	<b>UNIPROT ID:</b> P49593	
<b>Isotype:</b> IgG2a	<b>Full Name:</b> protein phosphatase 1F (PP2C domain containing)	
<b>Immunogen Catalog Number:</b> AG10316	<b>Calculated MW:</b> 453 aa, 50 kDa	
	<b>Observed MW:</b> 50 kDa	

## Applications

**Tested Applications:**  
WB, Indirect ELISA

**Species Specificity:**  
Human

## Background Information

Mg<sup>2+</sup>/Mn<sup>2+</sup>-dependent protein phosphatase 1F (PPM1F) belongs to the PP2C family of Ser/Thr protein phosphatases and is the critical enzyme responsible for dephosphorylating the threonine motif. PPM1F is ubiquitous in various tissues and organs (PMID: 26498692). High expression of PPM1F was positively associated with poor survival and tumor recurrence in patients with cancers and PPM1F might be a potential biomarker in HCC patients (PMID: 30470261).

## Storage

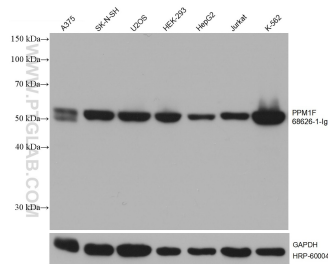
**Storage:**  
Store at -80°C.

**Storage Buffer:**  
PBS Only

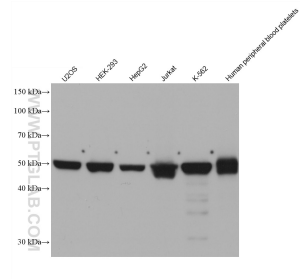
For technical support and original validation data for this product please contact:  
T: 1 (888) 4PTGLAB (1-888-478-4522) (toll free in USA), or 1(312) 455-8498 (outside USA)  
E: [proteintech@ptglab.com](mailto:proteintech@ptglab.com)  
W: [ptglab.com](http://ptglab.com)

This product is exclusively available under Proteintech Group brand and is not available to purchase from any other manufacturer.

## Selected Validation Data



Various lysates were subjected to SDS PAGE followed by western blot with 68626-1-Ig (PPM1F antibody) at dilution of 1:20000 incubated at room temperature for 1.5 hours. The membrane was stripped and reblotted with HRP-conjugated GAPDH Monoclonal antibody (HRP-60004) as loading control. This data was developed using the same antibody clone with 68626-1-PBS in a different storage buffer formulation.



Various lysates were subjected to SDS PAGE followed by western blot with 68626-1-Ig (PPM1F antibody) at dilution of 1:10000 incubated at room temperature for 1.5 hours. This data was developed using the same antibody clone with 68626-1-PBS in a different storage buffer formulation.