

For Research Use Only

# Cytokeratin 8 Monoclonal antibody, PBS Only

Catalog Number: 68627-5-PBS



## Basic Information

<b>Catalog Number:</b> 68627-5-PBS	<b>GenBank Accession Number:</b> BC000654	<b>Purification Method:</b> Protein G purification
<b>Size:</b> 100ug , Concentration: 1 mg/ml by Nanodrop;	<b>GeneID (NCBI):</b> 3856	<b>CloneNo.:</b> 2D9G8
<b>Source:</b> Mouse	<b>UNIPROT ID:</b> P05787	
<b>Isotype:</b> IgG1	<b>Full Name:</b> keratin 8	
<b>Immunogen Catalog Number:</b> AG0488	<b>Calculated MW:</b> 54 kDa	

## Applications

**Tested Applications:**  
IHC, Indirect ELISA

**Species Specificity:**  
human

## Background Information

Cytokeratin 8 (CK8) is a protein that belongs to the cytokeratin family, which is a group of structural proteins found in the intracytoplasmic cytoskeleton of epithelial cells. CK8 forms intermediate filaments within the cytoplasm of simple epithelial cells, typically as a dimer with cytokeratin 18 (CK18). These filaments provide a stabilizing framework that helps determine cell shape and enables cells to cope with mechanical stress. CK8/CK18 filaments also serve as a mesh of "paths" for signaling molecules, metabolites, and pathogens to travel within the cell in an organized manner. CK8 is expressed in various epithelial tissues and is particularly associated with glandular and simple epithelia. Its expression is also a significant marker in several types of cancer, including lung and esophageal cancer, where it can indicate tumor progression and poor prognosis.

## Storage

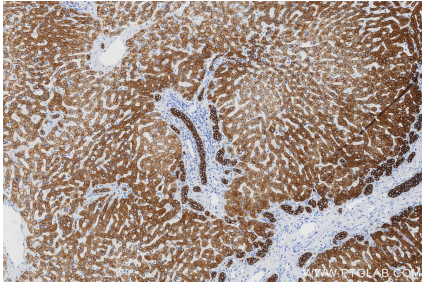
**Storage:**  
Store at -80°C.

**Storage Buffer:**  
PBS only, pH7.3

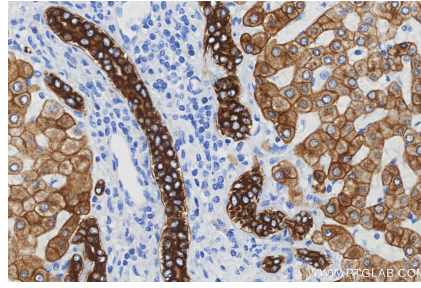
For technical support and original validation data for this product please contact:  
T: 1 (888) 4PTGLAB (1-888-478-4522) (toll free in USA), or 1(312) 455-8498 (outside USA)      E: [proteintech@ptglab.com](mailto:proteintech@ptglab.com)  
W: [ptglab.com](http://ptglab.com)

**This product is exclusively available under Proteintech Group brand and is not available to purchase from any other manufacturer.**

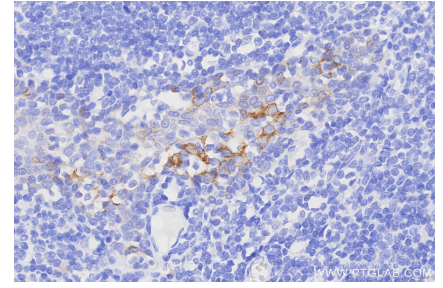
## Selected Validation Data



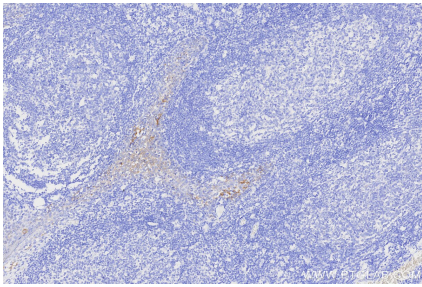
Immunohistochemical analysis of paraffin-embedded human hepatocirrhosis tissue slide using 68627-5-Ig (Cytokeratin 8 antibody) at dilution of 1:10000 (under 10x lens). Heat mediated antigen retrieval with Tris-EDTA buffer (pH 9.0). This data was developed using the same antibody clone with 68627-5-PBS in a different storage buffer formulation.



Immunohistochemical analysis of paraffin-embedded human hepatocirrhosis tissue slide using 68627-5-Ig (Cytokeratin 8 antibody) at dilution of 1:10000 (under 40x lens). Heat mediated antigen retrieval with Tris-EDTA buffer (pH 9.0). This data was developed using the same antibody clone with 68627-5-PBS in a different storage buffer formulation.



Immunohistochemical analysis of paraffin-embedded human tonsillitis tissue slide using 68627-5-Ig (Cytokeratin 8 antibody) at dilution of 1:10000 (under 40x lens). Heat mediated antigen retrieval with Tris-EDTA buffer (pH 9.0). This data was developed using the same antibody clone with 68627-5-PBS in a different storage buffer formulation.



Immunohistochemical analysis of paraffin-embedded human tonsillitis tissue slide using 68627-5-Ig (Cytokeratin 8 antibody) at dilution of 1:10000 (under 10x lens). Heat mediated antigen retrieval with Tris-EDTA buffer (pH 9.0). This data was developed using the same antibody clone with 68627-5-PBS in a different storage buffer formulation.