

For Research Use Only

# UNR; CSDE1 Monoclonal antibody

Catalog Number: 68629-1-Ig



## Basic Information

<b>Catalog Number:</b> 68629-1-Ig	<b>GenBank Accession Number:</b> BC032446	<b>Purification Method:</b> Protein G purification
<b>Size:</b> 150ul , Concentration: 1000 µg/ml by Nanodrop;	<b>GeneID (NCBI):</b> 7812	<b>CloneNo.:</b> 1D9C5
<b>Source:</b> Mouse	<b>Full Name:</b> cold shock domain containing E1, RNA-binding	<b>Recommended Dilutions:</b> WB 1:5000-1:50000
<b>Isotype:</b> IgG1	<b>Calculated MW:</b> 798 aa, 89 kDa	
<b>Immunogen Catalog Number:</b> AG4349	<b>Observed MW:</b> 85-90 kDa	

## Applications

**Tested Applications:**  
WB, ELISA

**Species Specificity:**  
Human, mouse, rat

### Positive Controls:

WB : HCT 116 cells, MCF-7 cells, HeLa cells, HEK-293 cells, K-562 cells, HSC-T6 cells, NIH/3T3 cells

## Background Information

### Storage

**Storage:**  
Store at -20°C. Stable for one year after shipment.

**Storage Buffer:**  
PBS with 0.02% sodium azide and 50% glycerol pH 7.3.

Aliquoting is unnecessary for -20°C storage

\*\*\* 20ul sizes contain 0.1% BSA

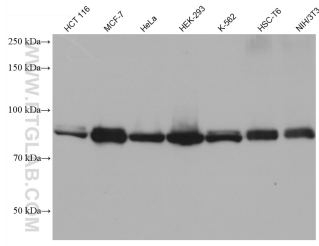
For technical support and original validation data for this product please contact:

T: 1 (888) 4PTGLAB (1-888-478-4522) (toll free  
in USA), or 1(312) 455-8498 (outside USA)

E: [proteintech@ptglab.com](mailto:proteintech@ptglab.com)  
W: [ptglab.com](http://ptglab.com)

This product is exclusively available under Proteintech Group brand and is not available to purchase from any other manufacturer.

## Selected Validation Data



Various lysates were subjected to SDS PAGE followed by western blot with 68629-1-Ig (UNR; CSDE1 antibody) at dilution of 1:10000 incubated at room temperature for 1.5 hours.