

PTPRH Monoclonal antibody

Catalog Number: 68635-1-Ig

Basic Information

Catalog Number: 68635-1-Ig	GenBank Accession Number: BC111716	Purification Method: Protein G purification
Size: 150ul , Concentration: 1000 ug/ml by Nanodrop;	GeneID (NCBI): 5794	CloneNo.: 3C6E8
Source: Mouse	UNIPROT ID: Q9HD43	Recommended Dilutions: WB 1:5000-1:50000
Isotype: IgG1	Full Name: protein tyrosine phosphatase, receptor type, H	
Immunogen Catalog Number: AG17351	Calculated MW: 1115 aa, 122 kDa	
	Observed MW: 200-210 kDa	

Applications

Tested Applications: WB, ELISA	Positive Controls: WB : pig spleen tissue, A431 cells
Species Specificity: human, pig	

Background Information

PTPRH, also known as SAP-1 (Stomach Cancer-Associated Protein-Tyrosine Phosphatase-1), is a member of the protein tyrosine phosphatase (PTP) family. These enzymes regulate cellular signaling by dephosphorylating tyrosine residues on proteins, counterbalancing kinase activity (PMID: 11278335). PTPRH is classified as a receptor-type PTP, characterized by an extracellular domain, a transmembrane region, and intracellular catalytic domains. In colorectal, gastric, and hepatocellular cancers, PTPRH is often upregulated and linked to poor prognosis (PMID: 12101188). Paradoxically, it may suppress tumorigenesis in other contexts by stabilizing cell adhesion. Overexpression in certain cancers suggests utility as a diagnostic or prognostic marker. The molecular weight of PTPRH is 122 kDa, it is reported that it can form a dimer with a molecular weight of 210 kDa (PMID:15850787).

Storage

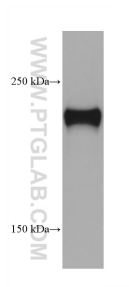
Storage:
Store at -20°C. Stable for one year after shipment.
Storage Buffer:
PBS with 0.02% sodium azide and 50% glycerol pH 7.3.
Aliquoting is unnecessary for -20°C storage

***** 20ul sizes contain 0.1% BSA**

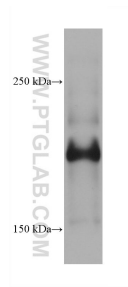
For technical support and original validation data for this product please contact:
T: 1 (888) 4PTGLAB (1-888-478-4522) (toll free in USA), or 1(312) 455-8498 (outside USA)
E: proteintech@ptglab.com
W: ptglab.com

This product is exclusively available under Proteintech Group brand and is not available to purchase from any other manufacturer.

Selected Validation Data



pig spleen tissue were subjected to SDS PAGE followed by western blot with 68635-1-Ig (PTPRH antibody) at dilution of 1:20000 incubated at room temperature for 1.5 hours.



A431 cells were subjected to SDS PAGE followed by western blot with 68635-1-Ig (PTPRH antibody) at dilution of 1:20000 incubated at room temperature for 1.5 hours.