

For Research Use Only

RAD1 Monoclonal antibody

Catalog Number: 68637-1-Ig



Basic Information

Catalog Number:

68637-1-Ig

Size:

150ul , Concentration: 1000 ug/ml by Nanodrop;

Source:

Mouse

Isotype:

IgG2a

Immunogen Catalog Number:

AG33257

GenBank Accession Number:

BC006837

GeneID (NCBI):

5810

UNIPROT ID:

O60671

Full Name:

RAD1 homolog (S. pombe)

Calculated MW:

32 kDa

Observed MW:

32 kDa

Purification Method:

Protein A purification

CloneNo.:

1A11E2

Recommended Dilutions:

WB 1:2000-1:10000

IP 0.5-4.0 ug for 1.0-3.0 mg of total protein lysate

Applications

Tested Applications:

WB, FC (Intra), IP, ELISA

Species Specificity:

human

Positive Controls:

WB : MKN-45 cells, U2OS cells, HeLa cells, HEK-293 cells, Jurkat cells, MOLT-4 cells, Raji cells, Daudi cells, K-562 cells

IP : HeLa cells,

Background Information

RAD1 is also named as REC1, hRAD1. The human RAD1 and HUS1 proteins associate in a complex that interacts with a highly modified form of RAD9. They concluded that these 3 proteins are central components of a DNA damage-responsive protein complex in human cells. It has 3 isoforms produced by alternative splicing.

Storage

Storage:

Store at -20°C. Stable for one year after shipment.

Storage Buffer:

PBS with 0.02% sodium azide and 50% glycerol pH 7.3.

Aliquoting is unnecessary for -20°C storage

*** 20ul sizes contain 0.1% BSA

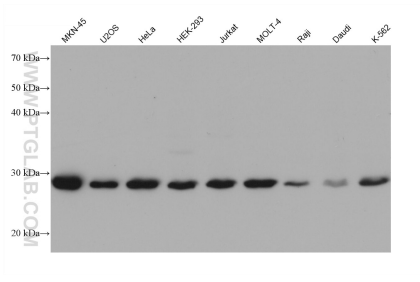
For technical support and original validation data for this product please contact:

T: 1 (888) 4PTGLAB (1-888-478-4522) (toll free in USA), or 1(312) 455-8498 (outside USA)

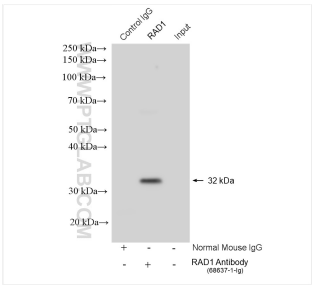
E: proteintech@ptglab.com
W: ptglab.com

This product is exclusively available under Proteintech Group brand and is not available to purchase from any other manufacturer.

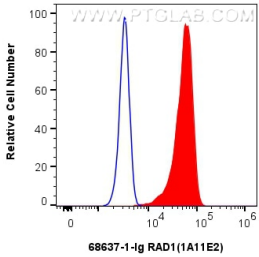
Selected Validation Data



Various lysates were subjected to SDS PAGE followed by western blot with 68637-1-Ig (RAD1 antibody) at dilution of 1:5000 incubated at room temperature for 1.5 hours.



IP result of anti-RAD1 (IP:68637-1-Ig, 4ug; Detection:68637-1-Ig 1:1000) with HeLa cells lysate 1320 ug.



1x10⁶ HeLa cells were intracellularly stained with 0.25 ug RAD1 Monoclonal antibody (68637-1-Ig, Clone:1A11E2) and Coralite®488-Conjugated Goat Anti-Mouse IgG(H+L) (SA00013-1)(red), or 0.25 ug Mouse IgG2a isotype control Mouse McAb (66360-2-Ig, Clone: 11A1B2) (blue). Cells were fixed and permeabilized with Transcription Factor Staining Buffer Kit (PF00011).