

For Research Use Only

cGAS Monoclonal antibody

Catalog Number: 68640-1-Ig



Basic Information

Catalog Number: 68640-1-Ig	GenBank Accession Number: BC113608	Purification Method: Protein G purification
Size: 150ul , Concentration: 1000 µg/ml by Nanodrop;	GeneID (NCBI): 115004	CloneNo.: 2G2C5
Source: Mouse	Full Name: chromosome 6 open reading frame 150	Recommended Dilutions: WB 1:1000-1:5000
Isotype: IgG1	Calculated MW: 496 aa, 54 kDa	
Immunogen Catalog Number: AG30074	Observed MW: 60 kDa	

Applications

Tested Applications: WB, ELISA	Positive Controls: WB : NK-92 cells, NCI-H1299 cells, SCaBER cells, A431 cells, THP-1 cells, Mo7e cells
Species Specificity: Human	

Background Information

cGAS (Cyclic GMP-AMP synthase), also known as C6orf150 or h-cGAS, is a 522 aa protein. cGAS mediates innate immune responses against invading pathogens, or against self-dsDNA, which causes autoimmune disorders. The cGAS sensor not only recognizes cytosolic dsDNA but also synthesizes the second messenger cGAMP from ATP and GTP, which then binds to and activates STING. STING undergoes conformational changes and translocation from the endoplasmic reticulum to the Golgi apparatus to encounter TBK1 and IRF3, eventually triggering the production of type I IFNs.

Storage

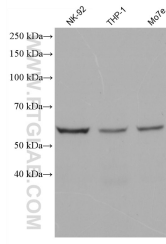
Storage:
Store at -20°C. Stable for one year after shipment.
Storage Buffer:
PBS with 0.02% sodium azide and 50% glycerol pH 7.3.
Aliquoting is unnecessary for -20°C storage

***** 20ul sizes contain 0.1%BSA**

For technical support and original validation data for this product please contact:
T: 1 (888) 4PTGLAB (1-888-478-4522) (toll free in USA), or 1(312) 455-8498 (outside USA) E: proteintech@ptglab.com W: ptglab.com

This product is exclusively available under Proteintech Group brand and is not available to purchase from any other manufacturer.

Selected Validation Data



Various lysates were subjected to SDS PAGE followed by western blot with 68640-1-Ig (cGAS antibody) at dilution of 1:5200 incubated at room temperature for 1.5 hours.