

For Research Use Only

EGFR Monoclonal antibody, PBS Only (Detector)

Catalog Number: 68643-2-PBS



Basic Information

Catalog Number: 68643-2-PBS	GenBank Accession Number: NM_005228.5	Purification Method: Protein G purification
Size: 100ug , Concentration: 1mg/ml by Nanodrop;	GeneID (NCBI): 1956	CloneNo.: 2D8G2
Source: Mouse	UNIPROT ID: P00533	
Isotype: IgG1	Full Name: epidermal growth factor receptor (erythroblastic leukemia viral (v-erb-b) oncogene homolog, avian)	
Immunogen Catalog Number: AG24947	Calculated MW: 134kd	

Applications

Tested Applications:
Sandwich ELISA, Indirect ELISA, Sample test

Species Specificity:
human

Product Information

68643-2-PBS targets EGFR as part of a matched antibody pair:

MP50069-1: 68643-1-PBS capture and 68643-2-PBS detection (validated in Sandwich ELISA)

Unconjugated mouse monoclonal antibody pair in PBS only (BSA and azide free) storage buffer at a concentration of 1 mg/mL, ready for conjugation.

This conjugation ready format makes antibodies ideal for use in many applications including: ELISAs, multiplex assays requiring matched pairs, mass cytometry, and multiplex imaging applications. Antibody use should be optimized by the end user for each application and assay.

Storage

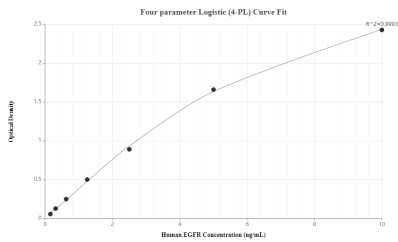
Storage:
Store at -80°C.

Storage Buffer:
PBS only, pH7.3

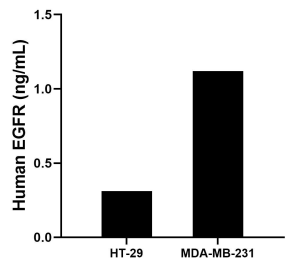
For technical support and original validation data for this product please contact:
T: 1 (888) 4PTGLAB (1-888-478-4522) (toll free in USA), or 1(312) 455-8498 (outside USA)
E: proteintech@ptglab.com
W: ptglab.com

This product is exclusively available under Proteintech Group brand and is not available to purchase from any other manufacturer.

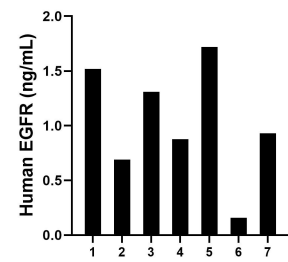
Selected Validation Data



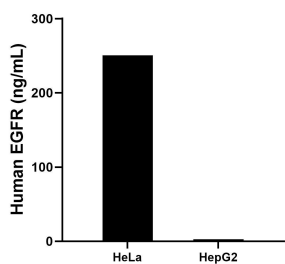
Sandwich ELISA standard curve of MP50069-1, EGFR Monoclonal Matched Antibody Pair, PBS Only. Capture antibody: 68643-1-PBS. Detection antibody: 68643-2-PBS. Standard: Eg0204. Range: 0.156-10 ng/mL



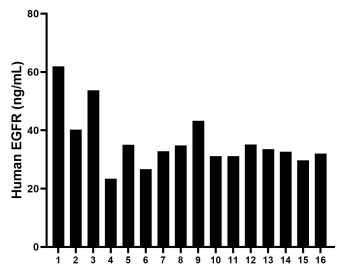
HT-29 and MDA-MB-231 were cultured in RPMI-1640 supplemented with 10% fetal bovine serum, 100 U/mL penicillin and 100 µg/mL streptomycin sulfate. An aliquot of the culture supernates were removed, assayed for human IDO 1, and measured 0.31 ng/mL and 1.12 ng/mL



Human milk of seven individual healthy human donors was measured. The human EGFR concentration of detected samples was determined to be 1.03 ng/mL with a range of 0.16 - 1.72 ng/mL



The mean EGFR concentration was determined to be 250.71 ng/mL in HeLa cell extract based on a 4.4 mg/mL extract load and 2.64 ng/mL in HepG2 cell extract based on a 4.1 mg/mL extract load.



Serum of sixteen individual healthy human donors was measured. The human EGFR concentration of detected samples was determined to be 36.08 ng/mL with a range of 23.43 - 61.95 ng/mL