

For Research Use Only

# SHCBP1 Monoclonal antibody, PBS Only

Catalog Number: 68647-1-PBS



## Basic Information

<b>Catalog Number:</b> 68647-1-PBS	<b>GenBank Accession Number:</b> BC030699	<b>Purification Method:</b> Protein G purification
<b>Size:</b> 100ug , Concentration: 1mg/ml by Nanodrop;	<b>GeneID (NCBI):</b> 79801	<b>CloneNo.:</b> 1B2E12
<b>Source:</b> Mouse	<b>UNIPROT ID:</b> Q8NEM2	
<b>Isotype:</b> IgG1	<b>Full Name:</b> SHC SH2-domain binding protein 1	
<b>Immunogen Catalog Number:</b> AG17517	<b>Calculated MW:</b> 672 aa, 76 kDa	
	<b>Observed MW:</b> 76 kDa	

## Applications

**Tested Applications:**  
WB, IHC, IF/ICC, Indirect ELISA

**Species Specificity:**  
human, mouse, rat

## Background Information

SHCBP1 was initially identified as a potential gene associated with cell proliferation in fibroblasts. SHCBP1 exerts a crucial physiological function in normal tissue development. Chen et al. showed that SHCBP1 is an essential component of FGF signaling in neural progenitor cells. SHCBP1 is also upregulated during T cell proliferation and regulates CD4+ T cell effector function in vivo. Recently, SHCBP1 was shown to be closely associated with cancer development.

## Storage

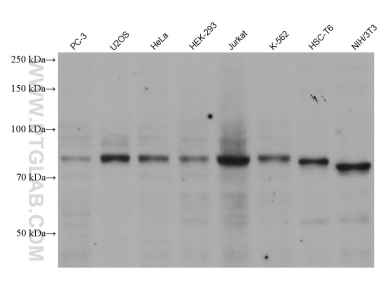
**Storage:**  
Store at -80°C.

**Storage Buffer:**  
PBS Only

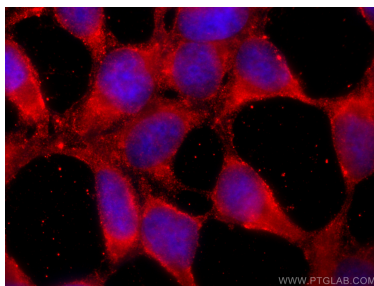
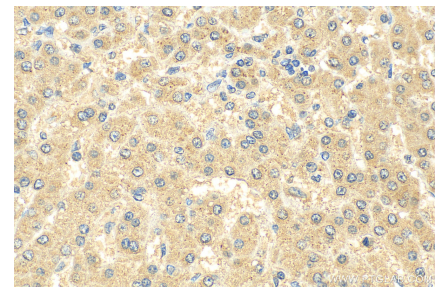
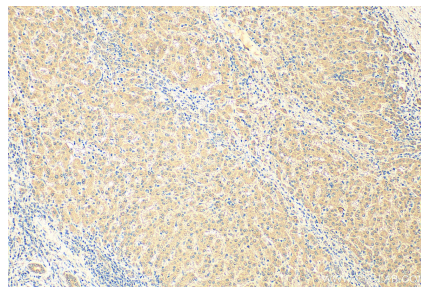
For technical support and original validation data for this product please contact:  
T: 1 (888) 4PTGLAB (1-888-478-4522) (toll free in USA), or 1(312) 455-8498 (outside USA)  
E: [proteintech@ptglab.com](mailto:proteintech@ptglab.com)  
W: [ptglab.com](http://ptglab.com)

This product is exclusively available under Proteintech Group brand and is not available to purchase from any other manufacturer.

## Selected Validation Data



Various lysates were subjected to SDS PAGE followed by western blot with 68647-1-Ig (SHCBP1 antibody) at dilution of 1:5000 incubated at room temperature for 1.5 hours. This data was developed using the same antibody clone with 68647-1-PBS in a different storage buffer formulation.



Immunofluorescent analysis of (-20°C Ethanol) fixed HEK-293 cells using SHCBP1 antibody (68647-1-Ig, Clone: 1B2E12 ) at dilution of 1:800 and CoraLite®488-Conjugated AffiniPure Goat Anti-Mouse IgG(H+L) (SA00013-1). This data was developed using the same antibody clone with 68647-1-PBS in a different storage buffer formulation.